

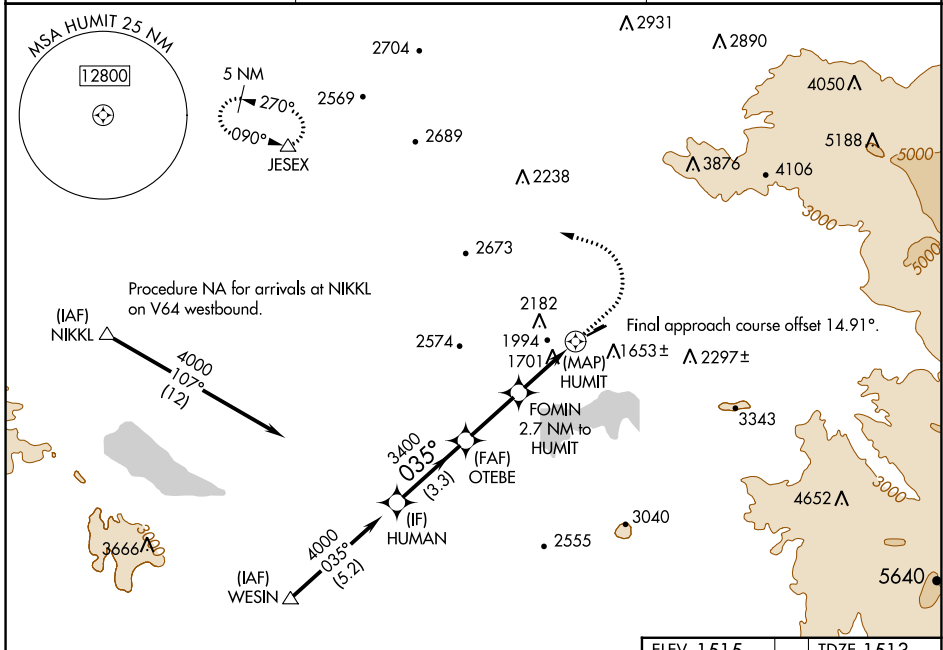
WAAS CH <b>45645</b> <b>W05A</b>	APP CRS <b>035°</b>	Rwy Idg <b>4315</b> TDZE <b>1513</b> Apt Elev <b>1515</b>
--	------------------------	---

# RNAV (GPS) RWY 5

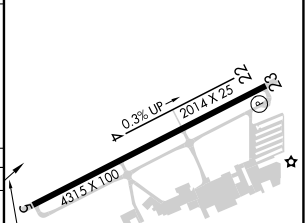
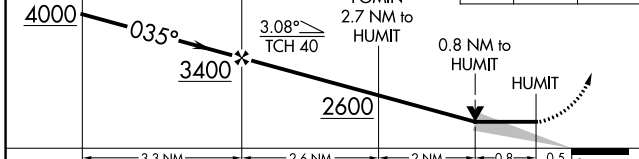
HEMET-RYAN (HMT)

RNP APCH - GPS.	MISSED APPROACH: Climb to 2000 then climbing left turn to 6000 direct JESEX and hold, continue climb-in-hold to 6000. *Missed approach requires minimum climb of 400 feet per NM to 3000.
⚠ When local altimeter setting not received, procedure NA.	

AWOS-3PT <b>118.375</b>	MARCH APP CON * <b>133.5 306.975</b>	UNICOM <b>123.0 (CTAF) 0</b>
----------------------------	---	---------------------------------



ELEV 1515	TDZE 1513
-----------	-----------



CATEGORY	A	B	C	D
LP MDA*	1960-1	447 (500-1)	1960-1 $\frac{3}{8}$ 447 (500-1 $\frac{3}{8}$ )	NA
LP MDA	2460-1 $\frac{1}{4}$	947 (1000-1 $\frac{1}{4}$ )	2460-2 $\frac{1}{2}$ 947 (1000-2 $\frac{1}{2}$ )	NA
LNAV MDA*	2160-1	647 (700-1)	2160-1 $\frac{7}{8}$ 647 (700-1 $\frac{7}{8}$ )	NA
LNAV MDA	2580-1 $\frac{1}{4}$ 1067 (1100-1 $\frac{1}{4}$ )	2580-1 $\frac{1}{2}$ 1067 (1100-1 $\frac{1}{2}$ )	2580-3 1067 (1100-3)	NA
CIRCLING	2580-1 $\frac{1}{4}$ 1065 (1100-1 $\frac{1}{4}$ )	2580-1 $\frac{1}{2}$ 1065 (1100-1 $\frac{1}{2}$ )	2800-3 1285 (1300-3)	NA

MRL Rwy 5-23 0

SW-3, 31 OCT 2024 to 28 NOV 2024

SW-3, 31 OCT 2024 to 28 NOV 2024