

# RNAV (GPS) RWY 1

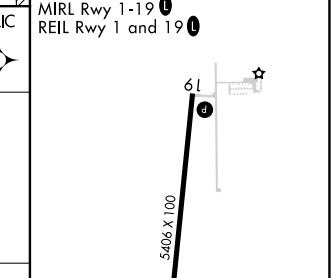
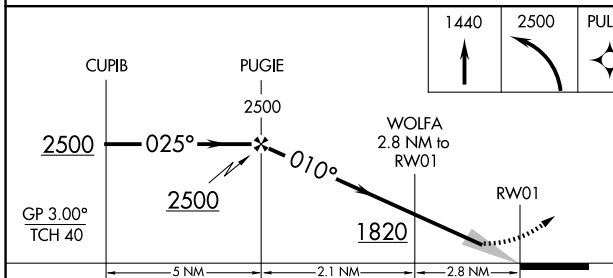
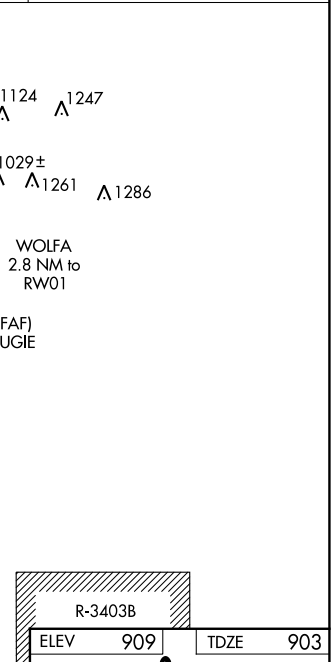
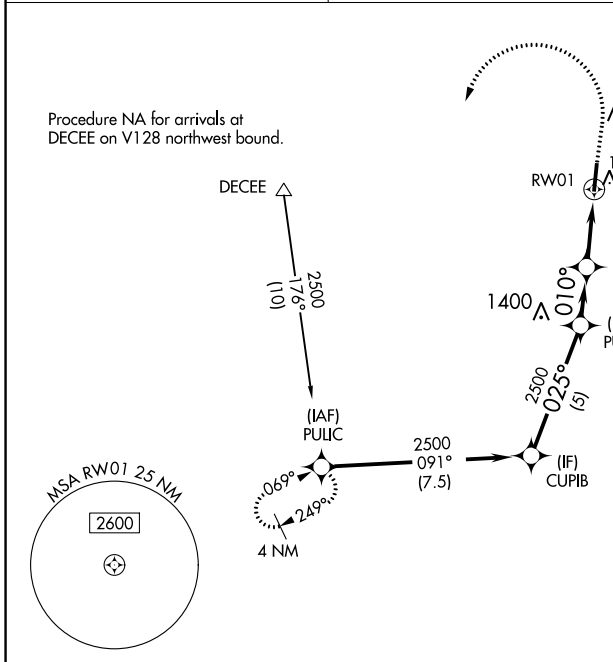
GREENSBURG MUNI (I34)

WAAS CH <b>62845</b> <b>W01A</b>	APP CRS <b>010°</b>	Rwy Idg TDZE Apt Elev	<b>5406</b> <b>903</b> <b>909</b>
--	------------------------	-----------------------------	---

RNP APCH - GPS.  
 ▽ Baro-VNAV NA. Use Columbus Muni altimeter setting, when not received, use Indianapolis Intl altimeter setting: increase LPV DA to 1269 feet; increase LNAV/VNAV DA to 1418 feet; increase all MDAs 40 feet and Circling visibility Cat C ¼ SM.  
 ▲ NA

MISSED APPROACH: Climb to 1440 then climbing left turn to 2500 direct PULIC and hold.

BAK AWOS-3 <b>119.75</b>	INDIANAPOLIS APP CON <b>127.15</b>	CTAF <b>122.9</b>
-----------------------------	---------------------------------------	----------------------



CATEGORY	A	B	C	D
LPV DA	1230-1	327 (400-1)		NA
LNAV/VNAV DA	1379-1⅓	476 (500-1⅓)		NA
LNAV MDA	1360-1	457 (500-1)	1360-1⅓ 457 (500-1⅓)	NA
CIRCLING	1540-1 631 (700-1)	1640-1 731 (800-1)	1640-2 731 (800-2)	NA

R-3403B	ELEV 909	TDZE 903
---------	----------	----------

MIRL Rwy 1-19  
REIL Rwy 1 and 19

EC-2, 31 OCT 2024 to 28 NOV 2024

EC-2, 31 OCT 2024 to 28 NOV 2024