

|  |                        |   |
|--|------------------------|---|
| WAAS<br>CH <b>69245</b><br><b>W19A</b> | APP CRS<br><b>190°</b> | Rwy Idg <b>5406</b><br>TDZE <b>909</b><br>Apt Elev <b>909</b> |
|--|------------------------|---|

# RNAV (GPS) RWY 19

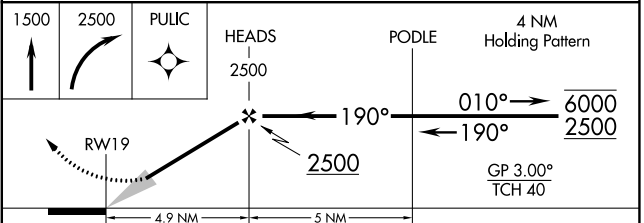
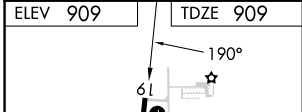
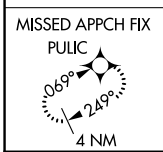
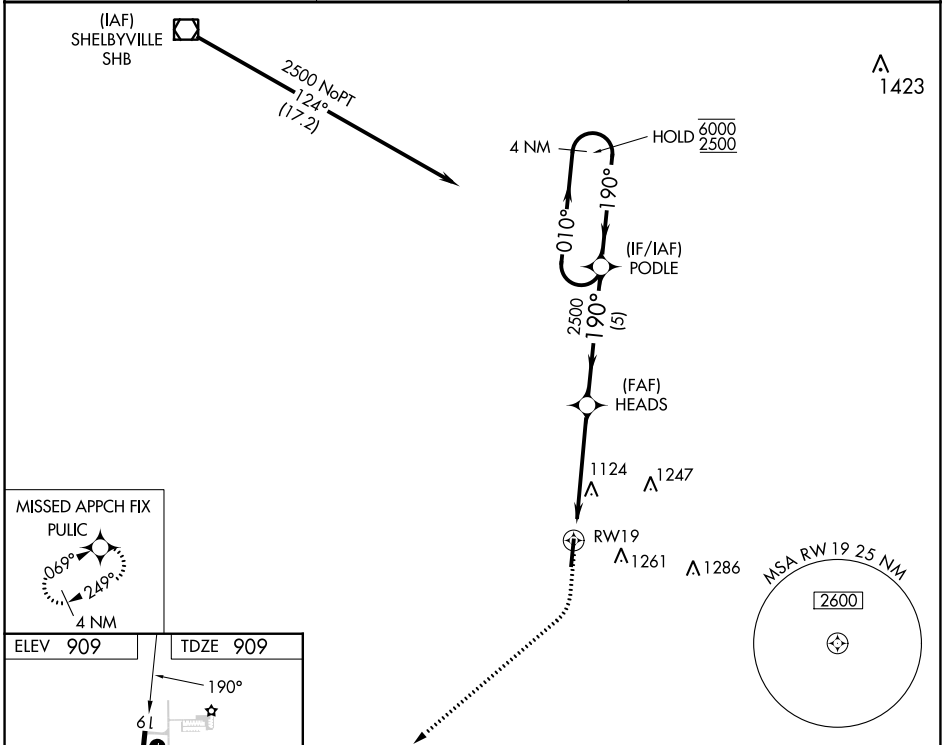
GREENSBURG MUNI (I34)

RNP APCH - GPS.

Baro-VNAV NA. Use Columbus Muni altimeter setting, when not received, use Indianapolis Int'l altimeter setting: increase LPV DA to 1327 feet and all visibilities 1/8 SM; increase LNAV/VNAV DA to 1419 feet; increase all MDAs 40 feet and Circling visibility Cat C 1/4 SM.

MISSED APPROACH: Climb to 1500 then climbing right turn to 2500 direct PULIC and hold.

|                             |                                       |                      |
|-----------------------------|---------------------------------------|----------------------|
| BAK AWOS-3<br><b>119.75</b> | INDIANAPOLIS APP CON<br><b>127.15</b> | CTAF<br><b>122.9</b> |
|-----------------------------|---------------------------------------|----------------------|



|              |                       |                       |                               |    |
|--------------|-----------------------|-----------------------|-------------------------------|----|
| CATEGORY     | A                     | B                     | C                             | D  |
| LPV DA       | 1288-1                |                       | 379 (400-1)                   | NA |
| LNAV/VNAV DA | 1380-1 1/8            |                       | 471 (500-1 1/8)               | NA |
| LNAV MDA     | 1500-1                | 591 (600-1)           | 1500-1 3/4<br>591 (600-1 3/4) | NA |
| CIRCLING     | 1540-1<br>631 (700-1) | 1640-1<br>731 (800-1) | 1640-2<br>731 (800-2)         | NA |

MIRL Rwy 1-19  
REIL Rws 1 and 19

GREENSBURG, INDIANA  
Orig 11JUL24

39°19'N-85°32'W

# GREENSBURG MUNI (I34) RNAV (GPS) RWY 19

EC-2, 31 OCT 2024 to 28 NOV 2024

EC-2, 31 OCT 2024 to 28 NOV 2024