

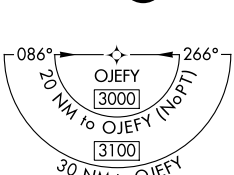
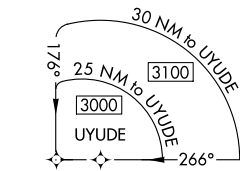
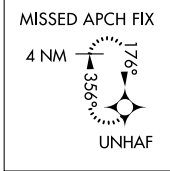
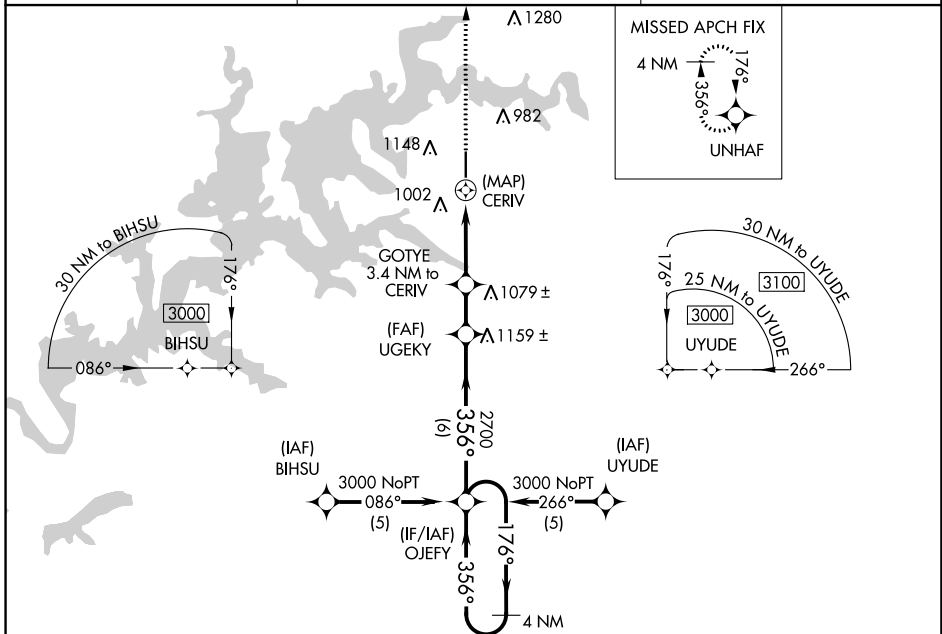
APP CRS <b>356°</b>	Rwy Idg <b>5200</b>
	TDZE <b>830</b>
	Apt Elev <b>831</b>

# RNAV (GPS) RWY 36

GROVE RGNL (G.M.J)

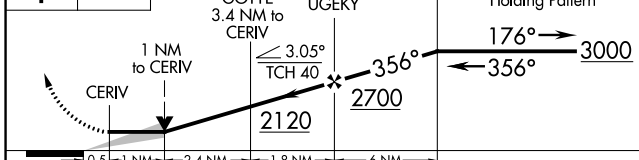
**▼** DME/DME RNP-0.3 NA. MISSED APPROACH: Climb to 3000 direct UNHAF and hold.

AWOS-3PT <b>119.025</b>	KANSAS CITY CENTER <b>128.6 282.325</b>	UNICOM <b>122.8 (CTAF)</b>
----------------------------	--	-------------------------------

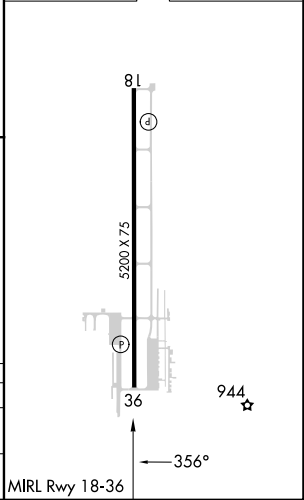


ELEV 831	TDZE 830
----------	----------

3000 UNHAF VGS1 and descent angles not coincident (VGS1 Angle 2.75/TCH 28).



CATEGORY	A	B	C	D
LNVA MDA	1280-1	450 (500-1)	1280-1¼ 450 (500-1¼)	NA
<b>C</b> CIRCLING	1500-1	669 (700-1)	1500-1¾ 669 (700-1¾)	NA



SC-1, 31 OCT 2024 to 28 NOV 2024

SC-1, 31 OCT 2024 to 28 NOV 2024