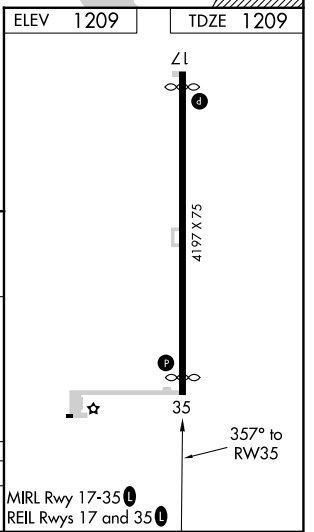
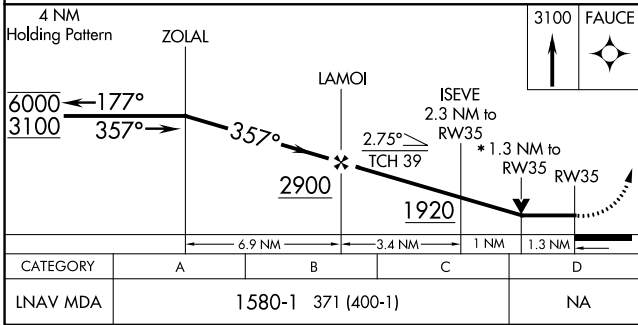
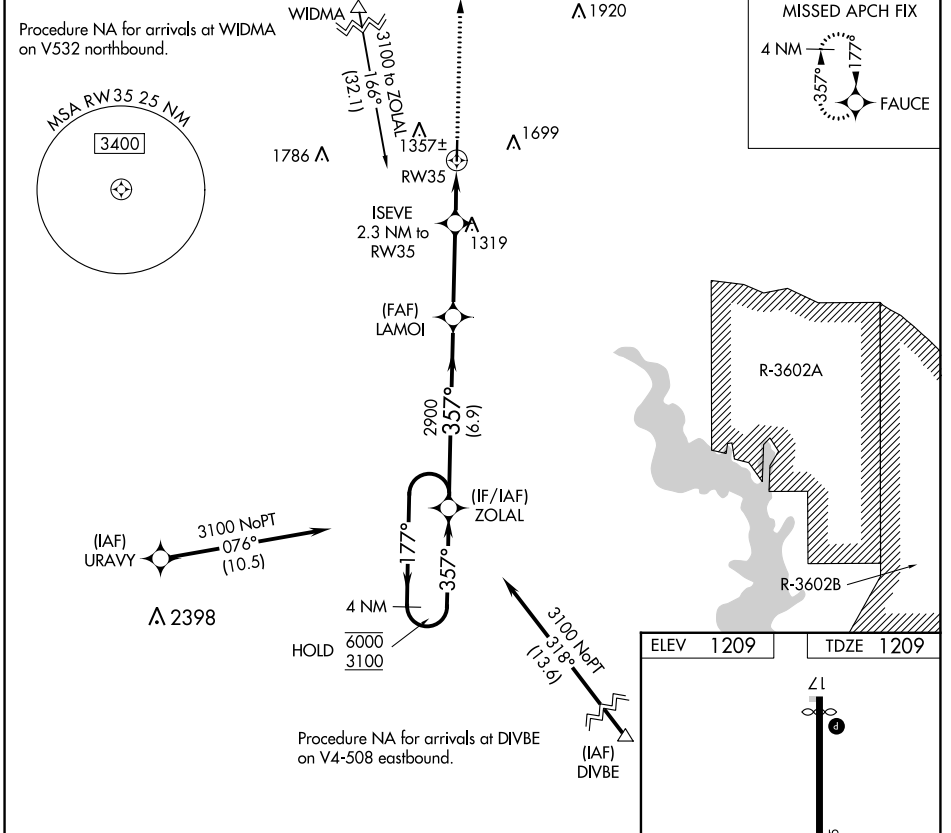


APP CRS	Rwy Idg	3970
357°	TDZE	1209
	Apt Elev	1209

RNAV (GPS) RWY 35

CLAY CENTER MUNI (CYW)

RNP APCH.		MISSED APPROACH: Climb to 3100 direct FAUCE and hold.
<p>NA Rwy 35 helicopter visibility reduction below $\frac{3}{8}$ SM NA. VDP NA when using Salina altimeter setting. When local altimeter setting not received, use Salina altimeter setting and increase all MDA 120 feet and LNAV Cat C visibility $\frac{3}{8}$ SM.</p>		
AWOS-3T	MARSHALL AAF APP CON *	UNICOM
119.95	121.25 254.35	122.8 (CTAF)



CATEGORY	A	B	C	D
LNAV MDA	1580-1	371 (400-1)		NA

MIRL Rwy 17-35 Δ

REIL Rws 17 and 35 Δ

CLAY CENTER, KANSAS Amdt 1 21MAY20

39°23'N-97°09'W

CLAY CENTER MUNI (CYW) RNAV (GPS) RWY 35

NC-2, 31 OCT 2024 to 28 NOV 2024

NC-2, 31 OCT 2024 to 28 NOV 2024