

WAAS CH <b>58025</b> <b>W18A</b>	APP CRS <b>178°</b>	Rwy Idg TDZE Apt Elev	<b>3001</b> <b>1434</b> <b>1434</b>
--	------------------------	-----------------------------	---

# RNAV (GPS) RWY 18

JERRY SUMNERS SR AURORA MUNI (2H2)

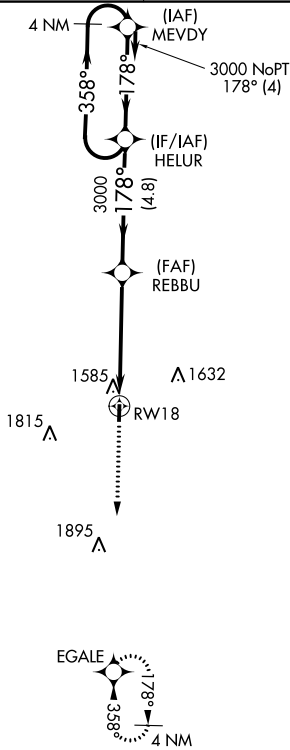
RNP APCH.

Use Springfield altimeter setting; when not received, use Branson altimeter setting and increase all MDA 40 feet. Circling Rwy 36 NA at night. Rwy 18 helicopter visibility reduction below 3/4 SM NA.

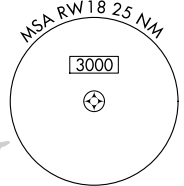
MISSED APPROACH: Climb to 3100 direct EGALE and hold.

SPRINGFIELD APP CON  
**124.95 318.2**

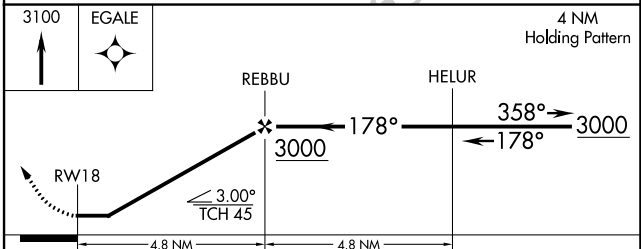
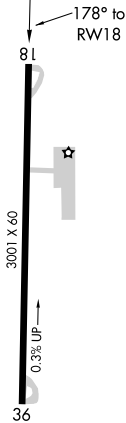
UNICOM  
**122.8 (CTAF)**



Procedure NA for arrivals at MEVDY on V14 northeast bound.



ELEV 1434	TDZE 1434
-----------	-----------



CATEGORY	A	B	C	D
LP MDA	1940-1	506 (600-1)		NA
LNAV MDA	1940-1	506 (600-1)		NA
CIRCLING	1980-1 546 (600-1)	2080-1 646 (700-1)		NA

MIRL Rwy 18-36

AURORA, MISSOURI

Orig-C 30DEC21

JERRY SUMNERS SR AURORA MUNI (2H2)

36°58'N-93°42'W

# RNAV (GPS) RWY 18

NC-3, 31 OCT 2024 to 28 NOV 2024

NC-3, 31 OCT 2024 to 28 NOV 2024