

WAAS CH 97734 W35A	APP CRS 353°	Rwy Idg 4100 TDZE 1151 Apt Elev 1153
--	------------------------	---

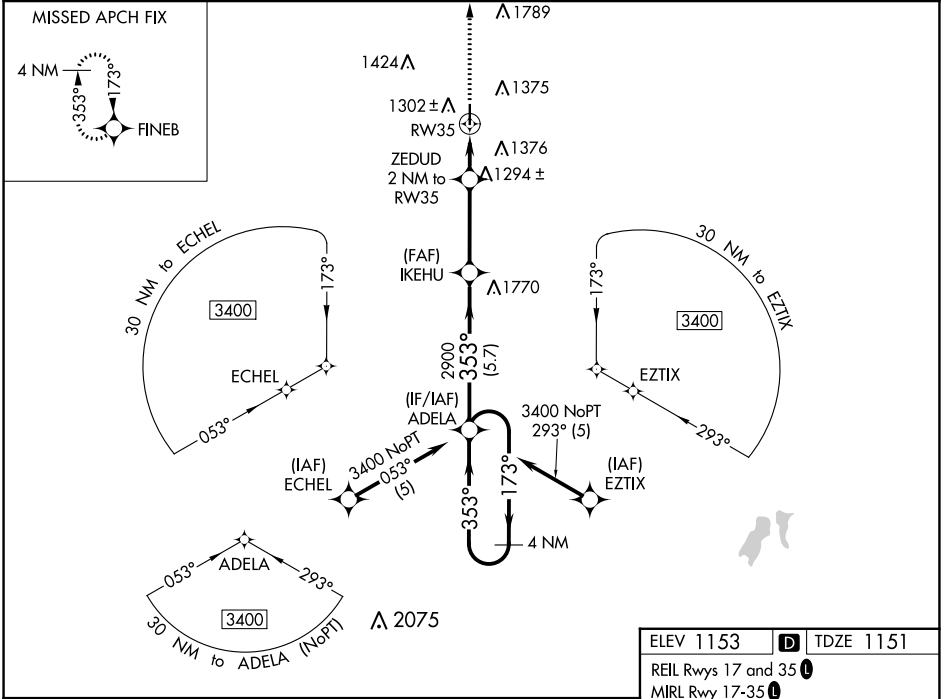
RNAV (GPS) RWY 35

ABILENE MUNI (K78)

⚠ For uncompensated Baro-VNAV systems, LNAV/VNAV NA below 17°C (2°F) or above 54°C (130°F). DME/DME RNP-0.3 NA. Baro-VNAV and VDP NA when using Salina altimeter setting. When local altimeter setting not received, use Salina altimeter setting. Circling Rwy 17 NA at night.

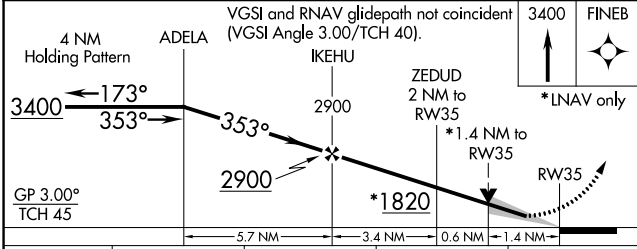
MISSED APPROACH: Climb to 3400 direct FINEB and hold.

AWOS-2 124.125	MARSHALL GCA* 121.25 254.35	UNICOM 122.8 (CTAF) 📻
--------------------------	---------------------------------------	--



NC-2, 31 OCT 2024 to 28 NOV 2024

NC-2, 31 OCT 2024 to 28 NOV 2024



ELEV 1153	D	TDZE 1151
REIL Rwy 17 and 35 📻		
MIRL Rwy 17-35 📻		

CATEGORY	A	B	C	D
LPV DA	1468-1	317 (400-1)		NA
LNAV/VNAV DA	1468-1	317 (400-1)		NA
LNAV MDA	1620-1	469 (500-1)	1620-1 3/8 469 (500-1 3/8)	NA
C CIRCLING	1740-1	587 (600-1)	1980-2 1/2 827 (900-2 1/2)	NA

