

VORTAC SLN <b>117.1</b> Chan <b>118</b>	APP CRS <b>087°</b>	Rwy Idg TDZE Apt Elev <b>N/A</b> <b>N/A</b> <b>1153</b>
---	------------------------	--

**VOR-A**  
ABILENE MUNI (K78)

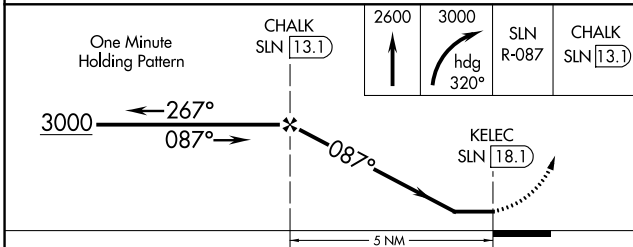
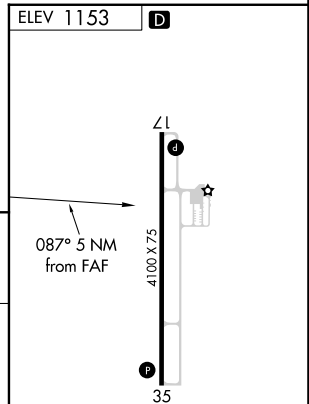
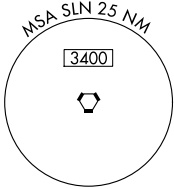
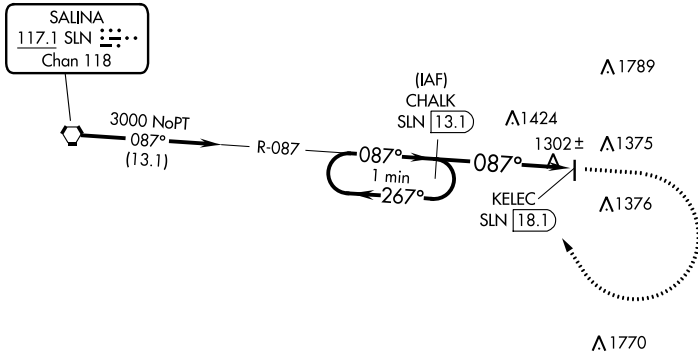
**⚠** DME required. When local altimeter setting not received, use Salina altimeter setting. Rwy 17 helicopter visibility reduction below 1 SM NA. Circling Rwy 17 NA at night.

**⚠** MISSED APPROACH: Climb to 2600 then climbing right turn to 3000 on heading 320° and SLN VORTAC R-087 to CHALK/13.1 DME and hold.

AWOS-2 <b>124.125</b>	MARSHALL GCA ★ <b>121.25 254.35</b>	UNICOM <b>122.8 (CTAF)</b> <b>Ⓛ</b>
--------------------------	--	--

**DME REQUIRED**

△ 2398



CATEGORY	A	B	C	D
<b>Ⓛ</b> CIRCLING	1760-1	607 (700-1)	1980-2½ 827 (900-2½)	NA

REIL Rwy 17 and 35 **Ⓛ**  
MIRL Rwy 17-35 **Ⓛ**

NC-2, 31 OCT 2024 to 28 NOV 2024

NC-2, 31 OCT 2024 to 28 NOV 2024