

VORTAC EMP <b>112.8</b> Chan <b>75</b>	APP CRS <b>187°</b>	Rwy Idg TDZE Apt Elev	<b>3504</b> <b>1207</b> <b>1208</b>
--	------------------------	-----------------------------	---

# VOR RWY 18

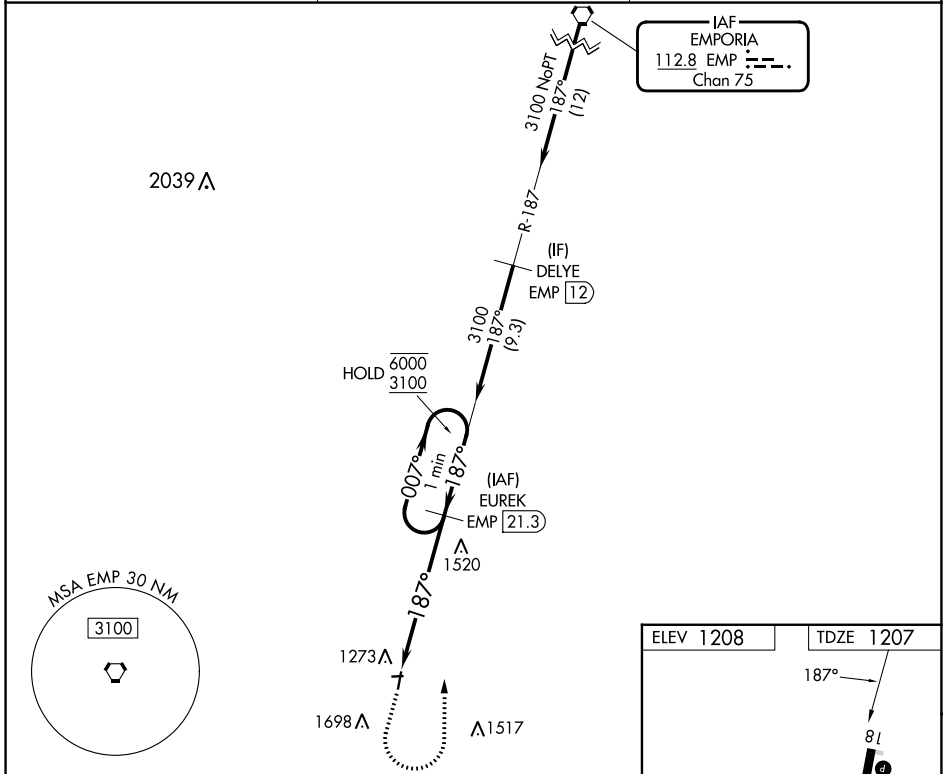
LT WILLIAM M MILLIKEN (13K)

DME required.

⚠ Circling NA to Rwys 8 and 26. When local altimeter setting not received, use Emporia altimeter setting: increase all MDAs 80 feet and S-18 Cat C visibility  $\frac{1}{4}$  SM, Circling Cat C visibility  $\frac{1}{4}$  SM.

MISSED APPROACH: Climb to 2100 then climbing left turn to 3100 on EMP R-187 to EUREK/21.3 DME and hold.

AWOS-3PT <b>120.975</b>	KANSAS CITY CENTER <b>120.2 323.2</b>	UNICOM <b>122.8 (CTAF) 0</b>
----------------------------	--	---------------------------------



NC-2, 31 OCT 2024 to 28 NOV 2024

NC-2, 31 OCT 2024 to 28 NOV 2024

2100 ↑ EMP R-187

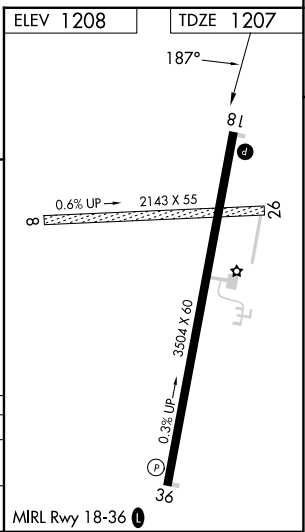
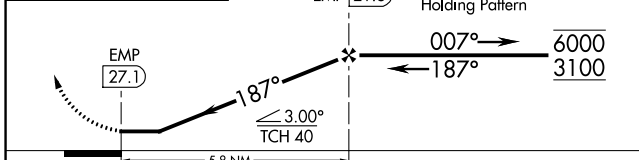
3100 EMP R-187

EUREK EMP 21.3

VGSI and descent angles not coincident (VGSI Angle 3.00/TCH 34).

EUREK EMP 21.3

One Minute Holding Pattern



CATEGORY	A	B	C	D
S-18	1820-1 613 (700-1)		1820-1 $\frac{3}{4}$ 613 (700-1 $\frac{3}{4}$ )	NA
CIRCLING	1820-1 612 (700-1)		2060-2 $\frac{1}{2}$ 852 (900-2 $\frac{1}{2}$ )	NA