

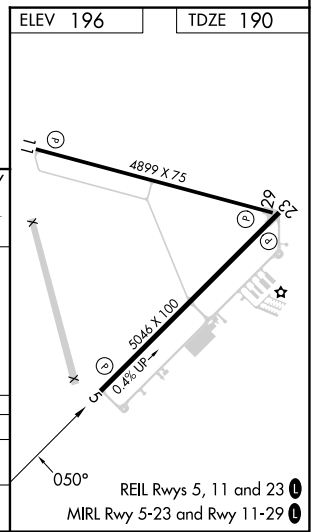
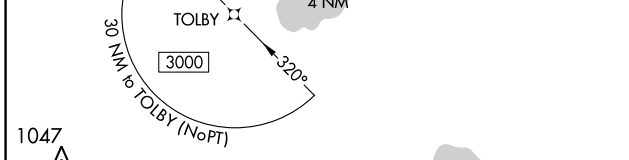
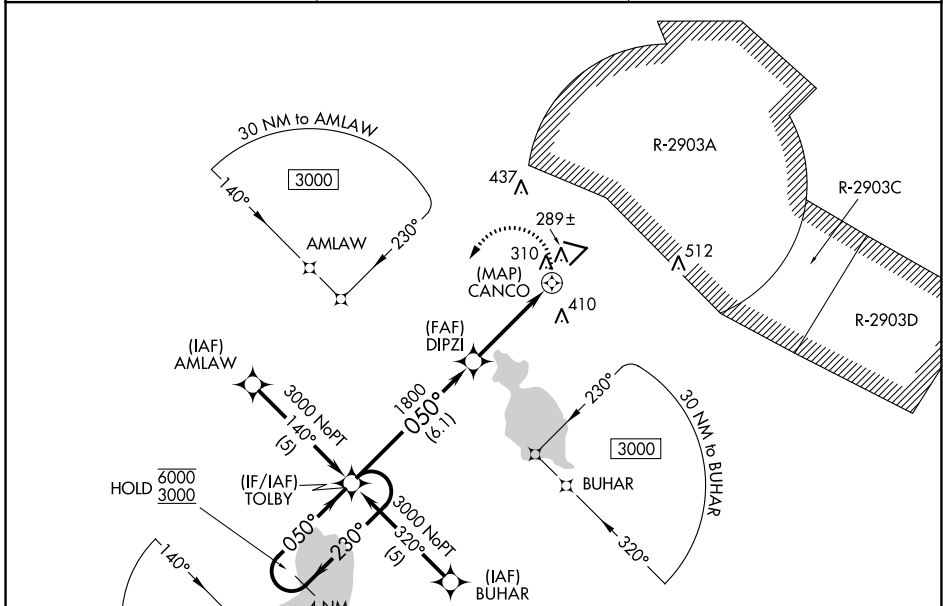
|             |          |             |
|-------------|----------|-------------|
| APP CRS     | Rwy Idg  | <b>5046</b> |
| <b>050°</b> | TDZE     | <b>190</b>  |
|             | Apt Elev | <b>196</b>  |

# RNAV (GPS) RWY 5

KEYSTONE HEIGHTS (42J)

|           |  |   |
|-----------|--|---|
| RNP APCH. | <p><b>⚠ NA</b> Circling to Rwy 11, 23, 29 NA at night. Circling NA for Cats B and C northeast of Rwy 11-29. Rwy 5 helicopter visibility reduction below 3/4 SM NA. When local altimeter setting not received, use Gainesville altimeter setting and increase all MDAs 60 feet.</p> | <p>MISSED APPROACH: Climbing left turn to 3000 direct TOLBY and hold.</p> |
|           |  |   |

|                          |   |                                 |
|--------------------------|---|---------------------------------|
| AWOS-3<br><b>124.275</b> | JACKSONVILLE APP CON<br><b>118.175 338.25</b> | UNICOM<br><b>122.7 (CTAF) 0</b> |
|--------------------------|---|---------------------------------|



| CATEGORY | A                      | B                      | C                      | D  |
|----------|------------------------|------------------------|------------------------|----|
| LNVA MDA | 600-1¼ 410 (500-1¼)    |                        |                        | NA |
| CIRCLING | 620-1¼<br>424 (500-1¼) | 660-1¼<br>464 (500-1¼) | 720-1½<br>524 (600-1½) | NA |

SE-3, 31 OCT 2024 to 28 NOV 2024

SE-3, 31 OCT 2024 to 28 NOV 2024