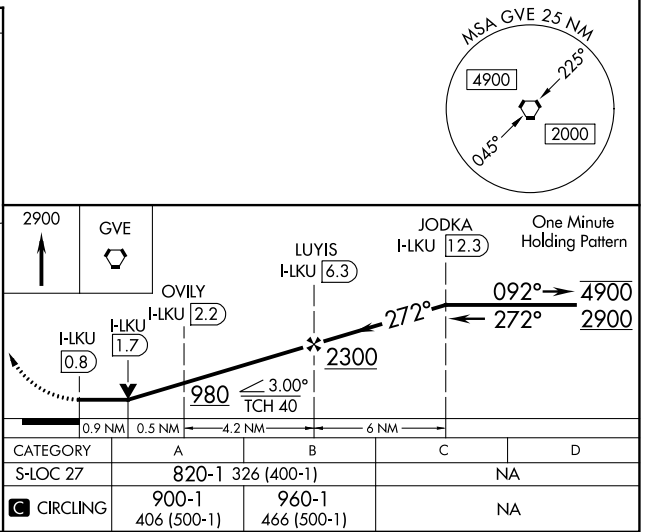
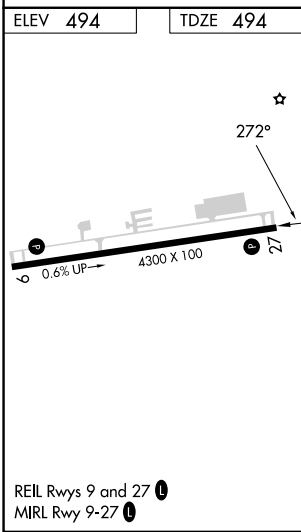
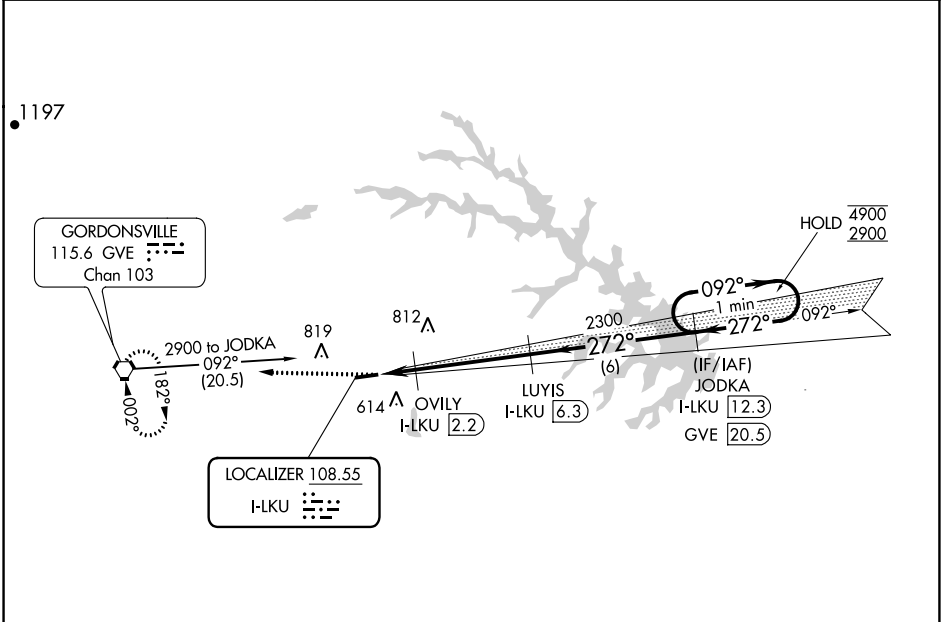


LOC I-LKU 108.55	APP CRS 272°	Rwy Idg TDZE Apt Elev	4300 494 494
----------------------------	------------------------	-----------------------------	---

LOC RWY 27
LOUISA COUNTY/FREEMAN FLD (LKU)

DME required.		MISSED APPROACH: Climb to 2900 direct GVE VORTAC and hold.
AWOS-3 119.475	POTOMAC APP CON 132.85 323.125	UNICOM 122.975 (CTAF) 0



NE-3, 31 OCT 2024 to 28 NOV 2024

NE-3, 31 OCT 2024 to 28 NOV 2024