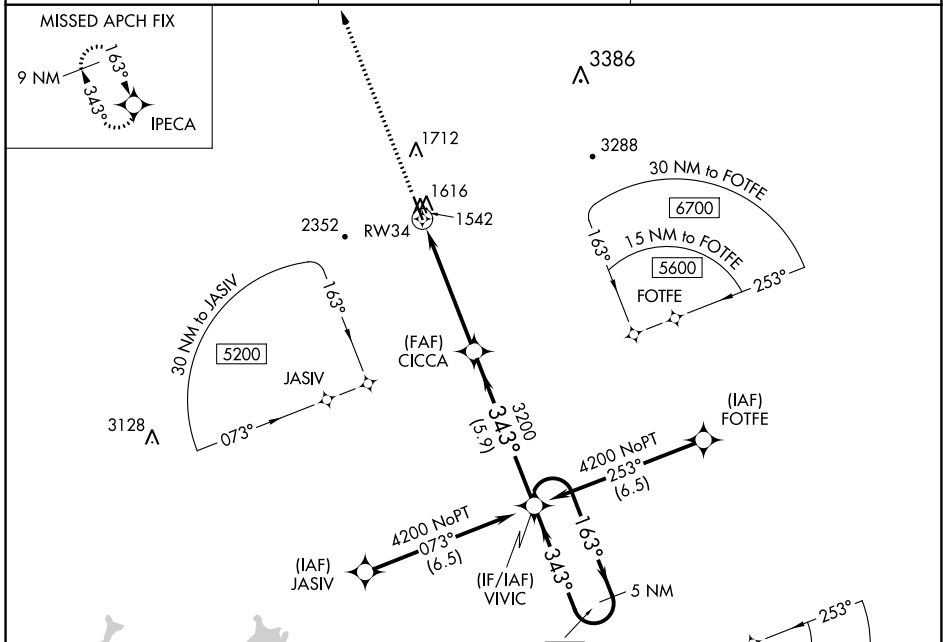


WAAS CH 77705 W34A	APP CRS 343°	Rwy Idg TDZE 1535 Apt Elev 1535
----------------------------------------	------------------------	-----------------------------------------------------

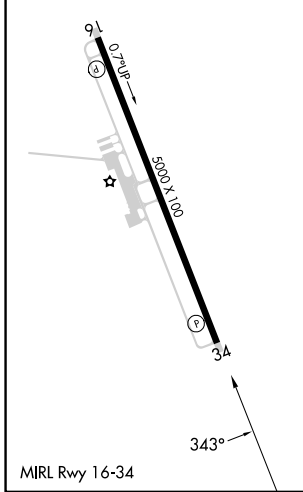
RNAV (GPS) RWY 34

PICKENS COUNTY (JZP)

RNP APCH - GPS.		MISSED APPROACH: Climb to 5600 direct IPECA and hold, continue climb-in-hold to 5600.
<p>▼ ▲</p> <p>Rwy 34 helicopter visibility reduction below $\frac{3}{4}$ SM NA.</p>		
AWOS-3PT 120.025	ATLANTA CENTER 133.1 342.425	UNICOM 122.725 (CTAF)



ELEV 1535	TDZE 1535
-----------	-----------



5600	IPECA	VGSI and RNAV glidepath not coincident (VGSI Angle 3.00/TCH 29).	5 NM Holding Pattern
↑	✧		
		CICCA 3200	VIVIC
		1 NM to RW34	163° → 6000
			← 343° 4200
			GP 3.00° TCH 40
		1 NM	4.1 NM
			5.9 NM
CATEGORY	A	B	C
LPV DA	1789- $\frac{3}{4}$	254 (300- $\frac{3}{4}$)	NA
LNAV MDA	1880-1	345 (400-1)	NA
CIRCLING	2040-1	2380-1 $\frac{1}{4}$	2800-3
	505 (600-1)	845 (900-1 $\frac{1}{4}$)	1265 (1300-3)

SE-4, 31 OCT 2024 to 28 NOV 2024

SE-4, 31 OCT 2024 to 28 NOV 2024