

WAAS CH <b>82602</b> <b>W34A</b>	APP CRS <b>344°</b>	Rwy Idg TDZE Apt Elev	<b>8500</b> <b>707</b> <b>707</b>
--	------------------------	-----------------------------	---

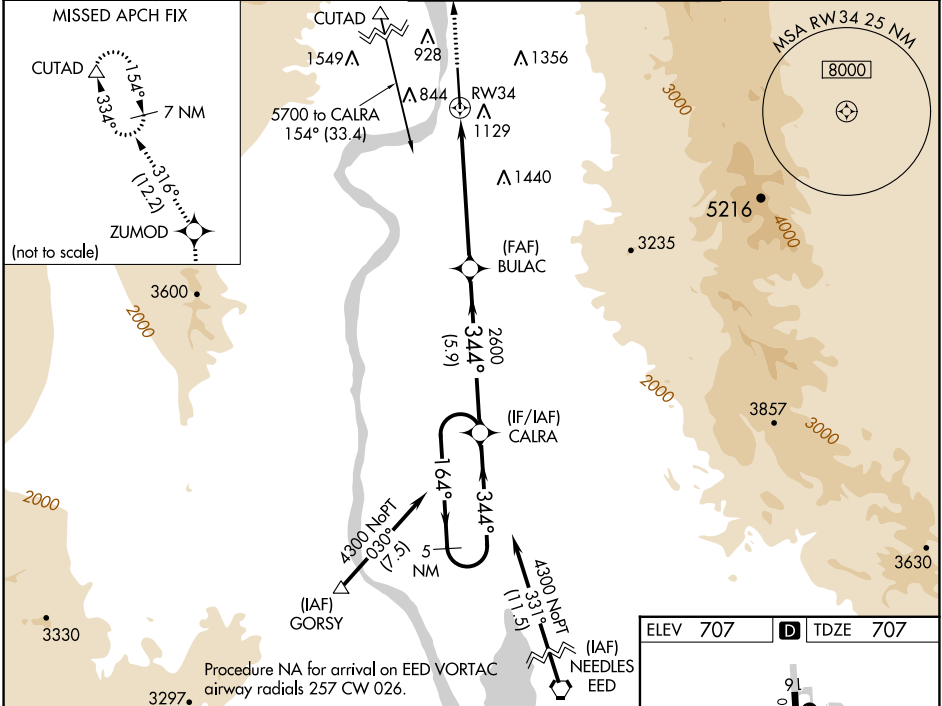
# RNAV (GPS) RWY 34

LAUGHLIN/BULLHEAD INTL (IFP)

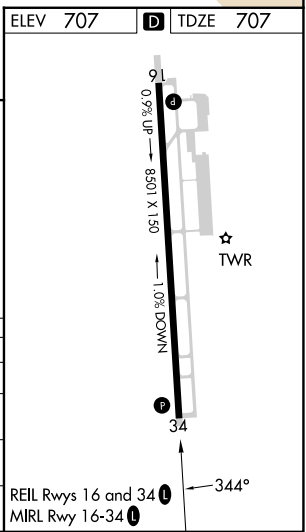
**⚠** For uncompensated Baro-VNAV systems, LNAV/VNAV NA below -16°C (4°F) or above 54°C (130°F).  
**⚠** Rwy 34 helicopter visibility reduction below 3/4 SM NA.  
 DME/DME RNP-0.3 NA.  
 Circling Rwy 16 NA at night.

**MISSED APPROACH:** Climb to 7600 direct ZUMOD and on track 316° to CUTAD and hold, continue climb-in-hold to 7600.

ATIS* <b>119.825</b>	LOS ANGELES CENTER <b>134.65 360.65</b>	BULLHEAD TOWER* <b>123.9 (CTAF)</b> <b>0</b>	GND CON <b>118.25</b>
-------------------------	--	---	--------------------------



7600	ZUMOD	tr	CUTAD	VGSI and RNAV glidepath not coincident (VGSI Angle 3.00/TCH 45). 5 NM Holding Pattern
↑	✦	316°	△	BULAC CALRA
*LNAV only				
RW34		*3.1 NM to RW34	2600	164° → 4300
← 3.1 NM		← 2.7 NM	← 5.9 NM	← 344° ← 344°
			2600	GP 3.00° TCH 52



CATEGORY	A	B	C	D
LPV DA	1352-2 1/2		645 (700-2 1/2)	
LNAV/VNAV DA	1506-3		799 (800-3)	
LNAV MDA	1740-1 1/4 1033 (1100-1 1/4)	1740-1 1/2 1033 (1100-1 1/2)	1740-3	1033 (1100-3)
CIRCLING	1740-1 1/4 1033 (1100-1 1/4)	1740-1 1/2 1033 (1100-1 1/2)	1800-3 1093 (1100-3)	2340-3 1633 (1700-3)

SW-4, 31 OCT 2024 to 28 NOV 2024

SW-4, 31 OCT 2024 to 28 NOV 2024