

WAAS CH 82042 W36A	APP CRS 002°	Rwy Idg TDZE Apt Elev	4300 1597 1607
----------------------------------------	------------------------	-----------------------------	-------------------------------------------

RNAV (GPS) RWY 36

KINGMAN/CLYDE CESSNA FLD (9K8)

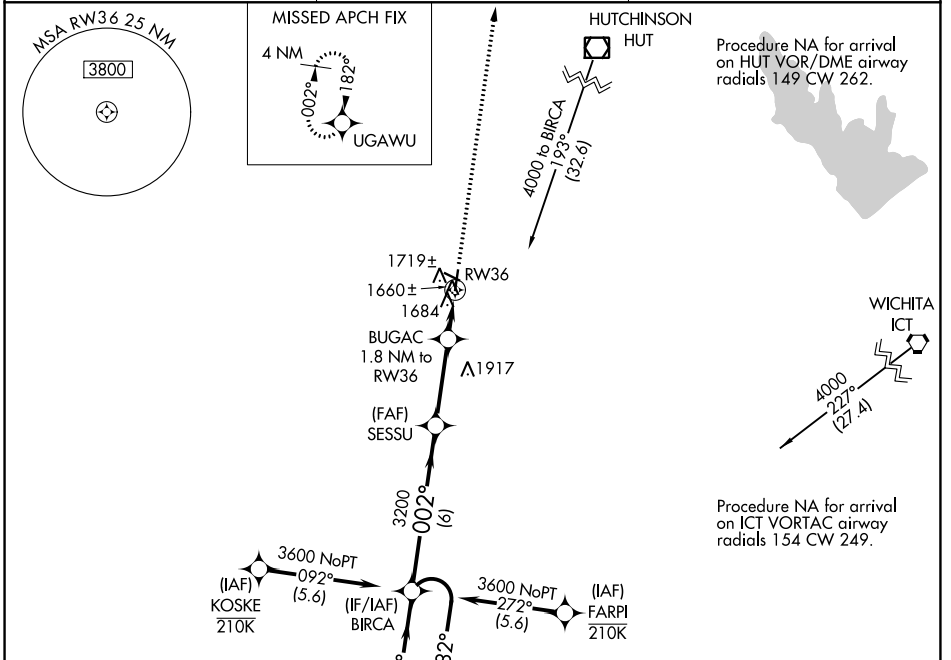
RNP APCH.
 ▼ Rwy 36 helicopter visibility reduction below 3/4 SM NA.
 Circling Rwy 11, 29 NA at night.

MISSED APPROACH: Climb to 3300
 direct UGAWU and hold.

AWOS-3PT
119.325

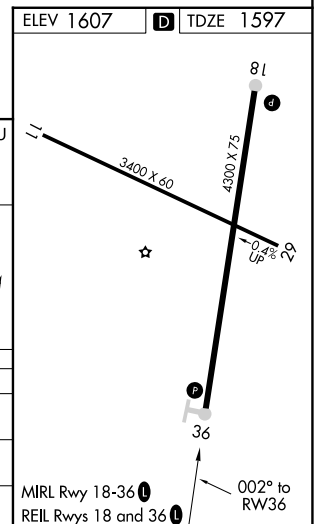
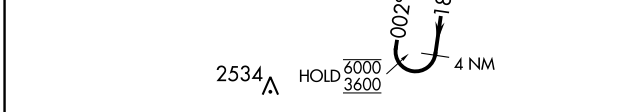
WICHITA APP CON
125.5 306.2

UNICOM
122.8 (CTAF)



NC-2, 31 OCT 2024 to 28 NOV 2024

NC-2, 31 OCT 2024 to 28 NOV 2024



4 NM Holding Pattern	BIRCA	SESSU	BUGAC 1.8 NM to RW36	0.9 NM to RW36	3300 UGAWU
6000 ← 182°	3600 → 002°	3200	3.00° TCH 36	2200	0.9
6 NM		3.1 NM		0.9	0.9

CATEGORY	A	B	C	D
LP MDA	1920-1 323 (400-1)			NA
LNAV MDA	1980-1	383 (400-1)	1980-1 1/8 383 (400-1 1/8)	NA
CIRCLING	2040-1 433 (500-1)	2060-1 453 (500-1)	2160-1 1/2 553 (600-1 1/2)	NA