

VORTAC MSN <b>108.6</b> Chan <b>23</b>	APP CRS <b>106°</b>	Rwy Idg TDZE Apt Elev <b>920</b>	<b>N/A</b> <b>N/A</b> <b>920</b>
--	------------------------	---	--

**VOR or GPS-A**  
BLACKHAWK AIRFIELD (87Y)

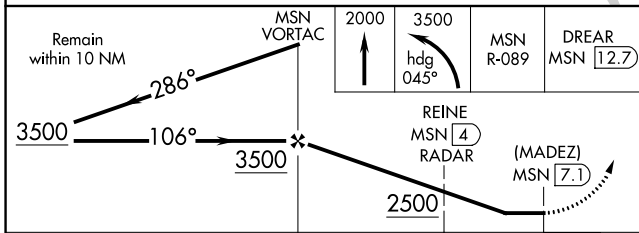
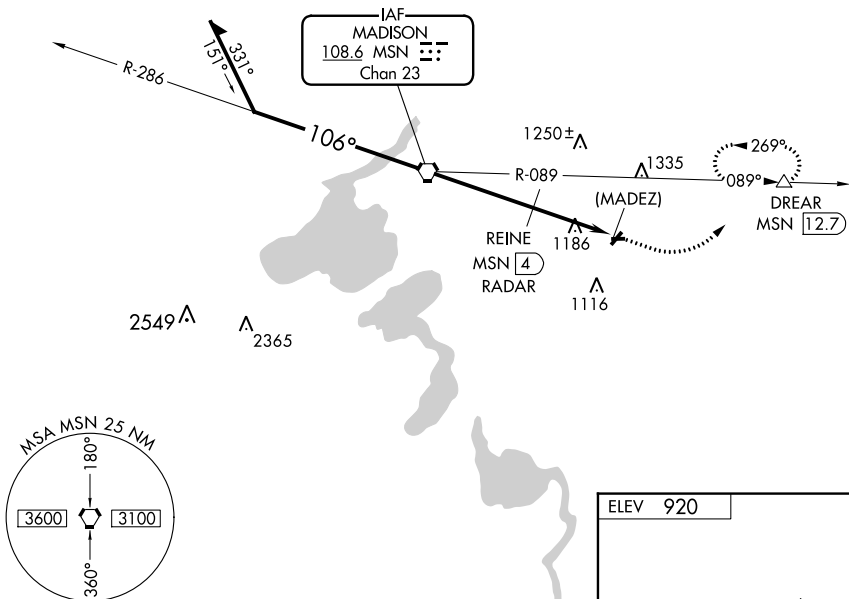
**NA** Use Dane County Rgnl-Truax fld altimeter setting. DME required.

**MISSED APPROACH:** Climb to 2000 then climbing left turn to 3500 via heading 045° and MSN R-089 to DREAR/MSN 12.7 DME and hold.

MADISON APP CON\* **120.1 343.7**

UNICOM **122.7 (CTAF)**

NoPT for arrivals on MSN VORTAC radials 231 CW 351.



ELEV 920

Runway: 281/14 X 57. Taxiway: 2203 X 56. Approach angles: 106°, 269°, 089°. DME: 0.5% UP, 0.7% UP.

CATEGORY	A	B	C	D
CIRCLING	2500-1¼ 1580 (1600-1¼)	2500-1½ 1580 (1600-1½)	NA	NA
REINE FIX MINIMUMS				
CIRCLING	1520-1 600 (600-1)	1560-1 640 (700-1)	NA	NA

LIRL Rwy 9-27

FAF to MAP 7.1 NM					
Knots	60	90	120	150	180
Min:Sec	7:06	4:44	3:33	2:50	2:22

EC-3, 31 OCT 2024 to 28 NOV 2024

EC-3, 31 OCT 2024 to 28 NOV 2024