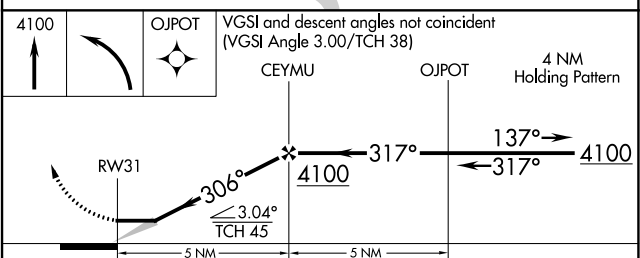
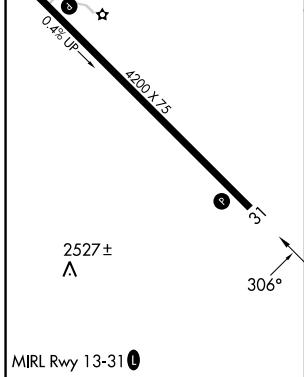
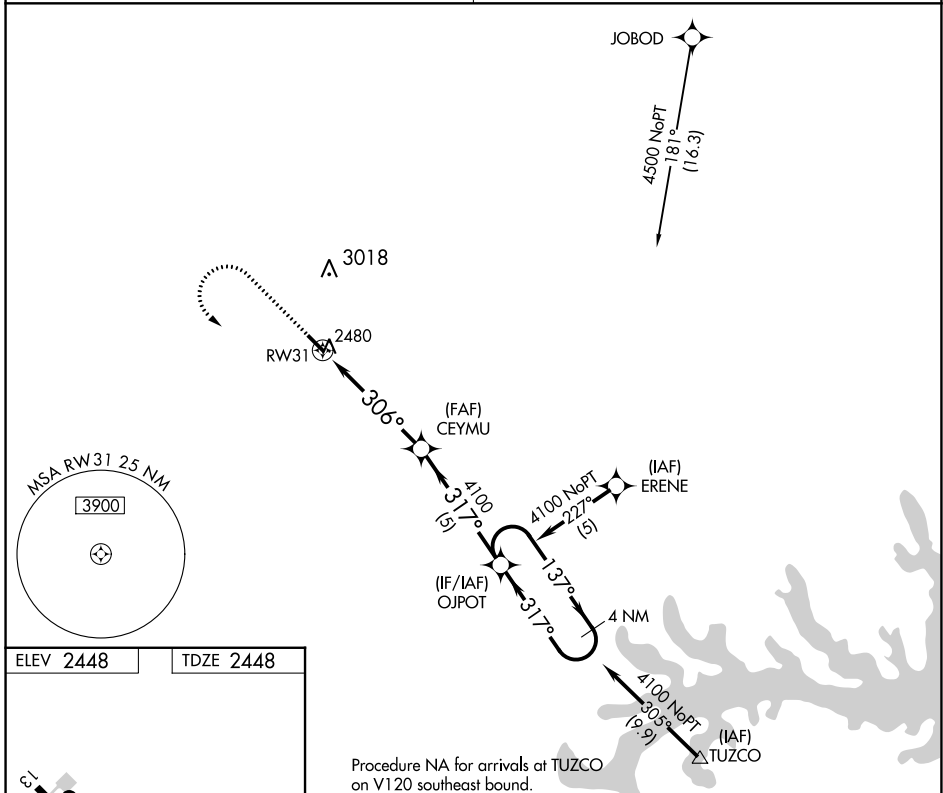


RNAV (GPS) RWY 31

CHEYENNE EAGLE BUTTE (84D)

APP CRS 306°	Rwy Idg 4200 TDZE 2448 Apt Elev 2448
------------------------	---

RNP APCH - GPS.	MISSED APPROACH: Climb to 4100 then turn left direct OJPOT WP and hold.
NA Use Pierre altimeter setting.	
MINNEAPOLIS CENTER 135.25 256.7	AUNICOM 122.8 (CTAF)



Procedure NA for arrivals at TUZCO on V120 southeast bound.	VGSIs and descent angles not coincident (VGSIs Angle 3.00/TCH 38)			
	CEYMU	OJPOT	4 NM Holding Pattern	
CATEGORY	A	B	C	D
LNAV MDA	3020-1	572 (600-1)	NA	
CIRCLING	3240-1 792 (800-1)	3240-1¼ 792 (800-1¼)	NA	

NC-1, 31 OCT 2024 to 28 NOV 2024

NC-1, 31 OCT 2024 to 28 NOV 2024