

WAAS CH <b>99333</b> <b>W36A</b>	APP CRS <b>356°</b>	Rwy Idg TDZE Apt Elev	<b>5000</b> <b>2222</b> <b>2238</b>
--	------------------------	-----------------------------	---

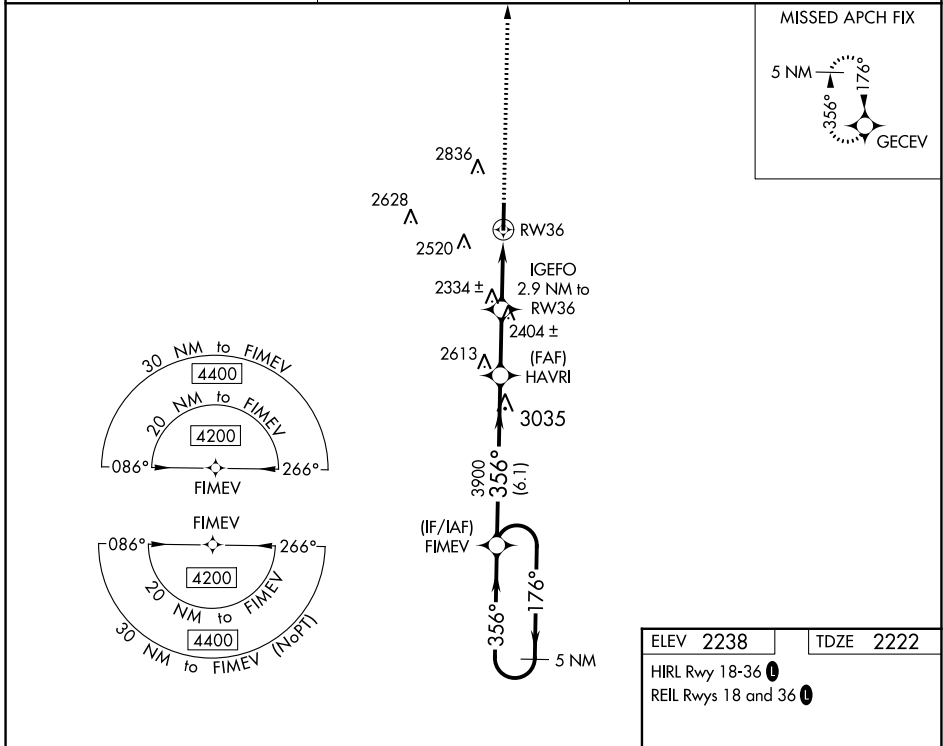
# RNAV (GPS) RWY 36

HILL CITY MUNI (HLC)

**⚠** Circling NA west of Rwy 18-36. DME/DME RNP-0.3 NA. VDP NA with Hays altimeter setting. When local altimeter setting not received, use Hays altimeter setting and increase all MDA 140 feet, increase LP Cat C visibility ½ mile, LNAV Cat C and Circling Cat C visibility ¼ mile. Helicopter visibility reduction below ¾ SM NA. Circling to Rwy 18 NA at night.

**MISSED APPROACH:** Climb to 4200 direct GECEV and hold.

ASOS <b>118,425</b>	DENVER CENTER <b>132.7 226,675</b>	CTAF <b>122.9 0</b>
------------------------	---------------------------------------	------------------------

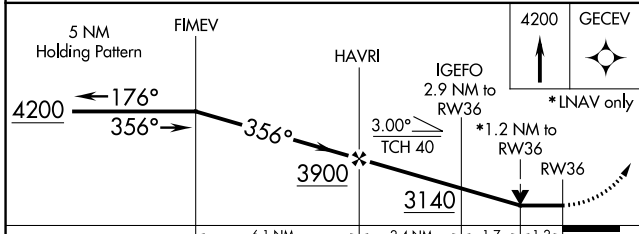


NC-2, 31 OCT 2024 to 28 NOV 2024

NC-2, 31 OCT 2024 to 28 NOV 2024

ELEV 2238	TDZE 2222
-----------	-----------

HIRL Rwy 18-36 **1**  
REIL Rws 18 and 36 **1**



CATEGORY	A	B	C	D
LP MDA	2600-1	378 (400-1)	2600-1 1/8 378 (400-1 1/8)	NA
LNAV MDA	2760-1	538 (600-1)	2760-1 1/8 538 (600-1 1/8)	NA
<b>C</b> CIRCLING	2760-1	522 (600-1)	2760-1 3/4 522 (600-1 3/4)	NA

