

WAAS CH <b>93741</b> <b>W25A</b>	APP CRS <b>228°</b>	Rwy Idg TDZE Apt Elev	<b>6409</b> <b>5278</b> <b>5278</b>
--	------------------------	-----------------------------	---

# RNAV (GPS) RWY 25

RANGELY (4VØ)

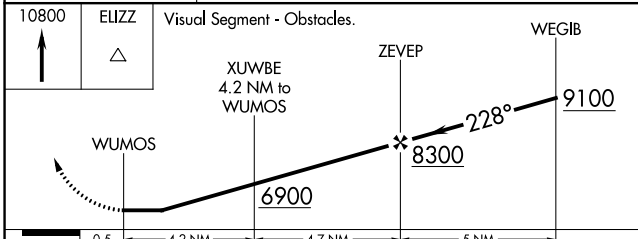
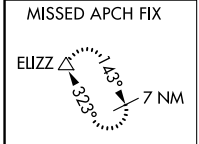
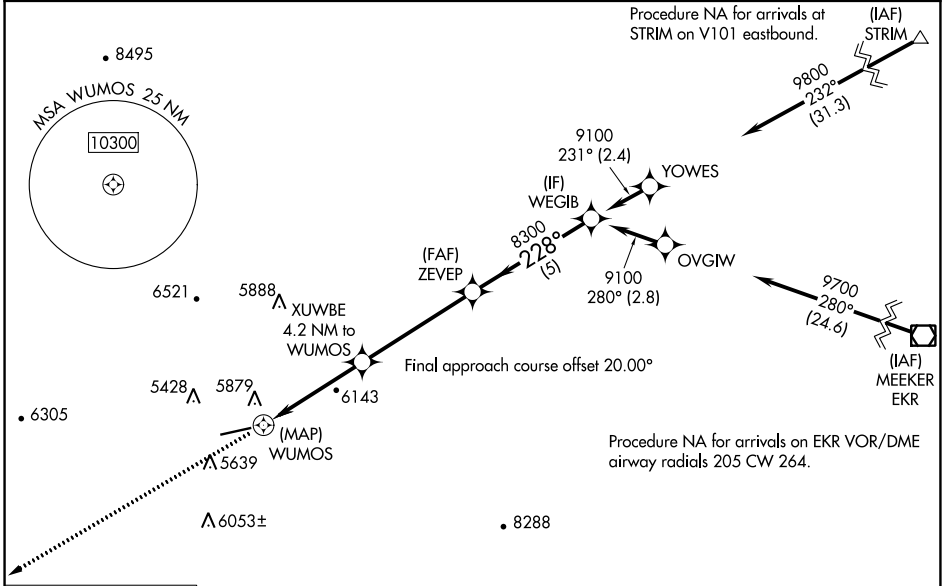
RNP APCH - GPS.

▼  
▲  
☒ -18°C

Rwy 25 helicopter visibility reduction below 1 SM NA.  
Procedure NA at night.

MISSED APPROACH: Climb to 10800 direct ELIZZ and hold, continue climb-in hold to 10800.

AWOS-3PT <b>119.025</b>	DENVER CENTER <b>134.5 327.8</b>	UNICOM <b>122.8 (CTAF) Ø</b>
----------------------------	-------------------------------------	---------------------------------



ELEV 5278	TDZE 5278
-----------	-----------

CIRCLING	6900-1¼ 1622 (1700-1¼)	6900-1½ 1622 (1700-1½)	7000-3 1722 (1800-3)	NA
----------	---------------------------	---------------------------	-------------------------	----

MIRL Rwy 7-25 Ø  
REIL Rws 7 and 25 Ø

CATEGORY	A	B	C	D
LP MDA	6400-1¼ 1122 (1200-1¼)	6400-1½ 1122 (1200-1½)	6400-3 1122 (1200-3)	NA
LNAV MDA	6400-1¼ 1122 (1200-1¼)	6400-1½ 1122 (1200-1½)	6400-3 1122 (1200-3)	NA
CIRCLING	6900-1¼ 1622 (1700-1¼)	6900-1½ 1622 (1700-1½)	7000-3 1722 (1800-3)	NA

SW-1, 31 OCT 2024 to 28 NOV 2024

SW-1, 31 OCT 2024 to 28 NOV 2024