

WAAS CH 53746 W13A	APP CRS 132°	Rwy Idg TDZE Apt Elev	5600 4234 4234
--	------------------------	-----------------------------	---

RNAV (GPS) RWY 13

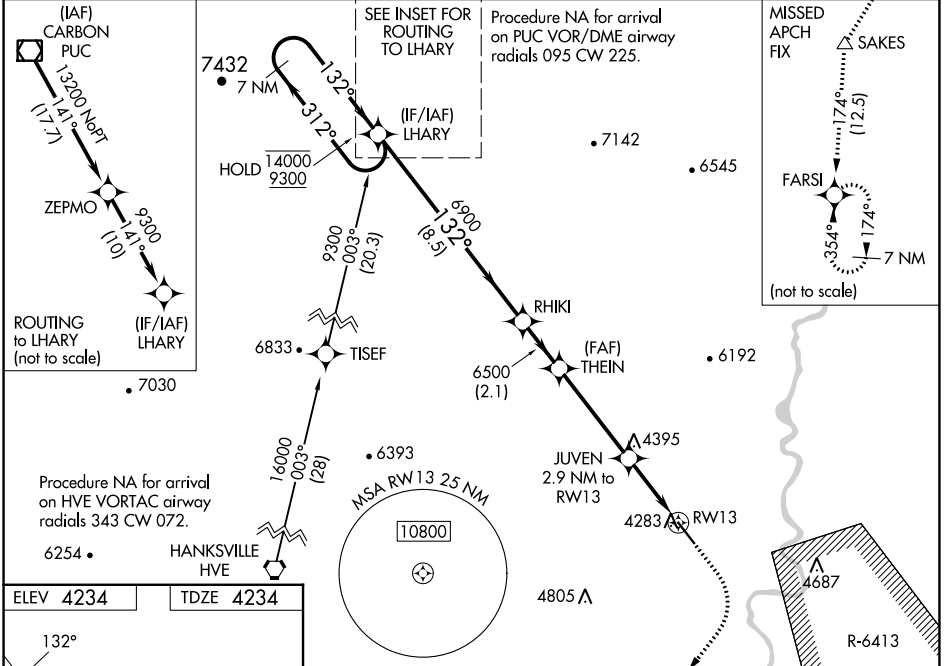
GREEN RIVER MUNI (U34)

RNP APCH - GPS.

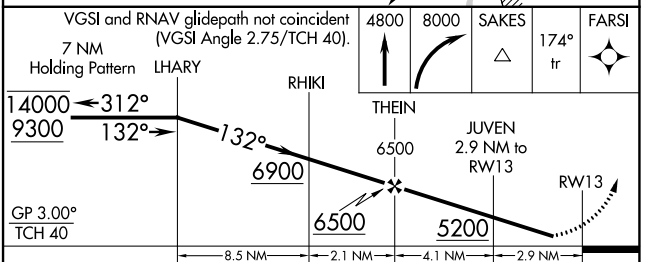
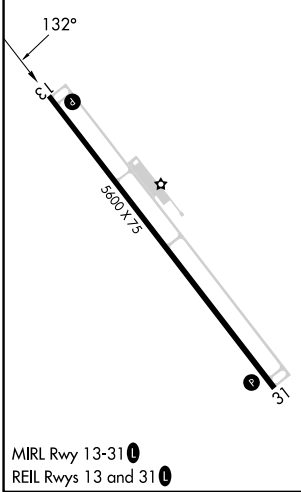
▼ **NA** Rwy 13 helicopter visibility reduction below ¾ SM NA. Use Moab altimeter setting; when not received, use Hanksville altimeter setting and increase LPV DA to 4603 feet; increase LNAV/VNAV DA to 4603 feet; increase all MDAs 20 feet and LNAV visibility Cat C/D ½ SM, and Circling visibility Cat D ¼ SM. Baro-VNAV NA. Circling NA for Cats C and D northeast of Rwy 13-31.

MISSED APPROACH: Climb to 4800, then climbing right turn to 8000 direct SAKES and on 174° track to FARSI and hold.

CNY ASOS 118.525	SALT LAKE CENTER 133.6 269.25	UNICOM 122.8 (CTAF) 0
----------------------------	---	---------------------------------



ELEV 4234	TDZE 4234
------------------	------------------



CATEGORY	A	B	C	D
LPV DA		4588-1	354 (400-1)	
LNAV/VNAV DA		4588-1	354 (400-1)	
LNAV MDA	4640-1	406 (500-1)	4640-1½	406 (500-1½)
CIRCLING	4800-1 566 (600-1)	4840-1 606 (700-1)	4840-1¾ 606 (700-1¾)	5100-2¾ 866 (900-2¾)

SW-4, 31 OCT 2024 to 28 NOV 2024

SW-4, 31 OCT 2024 to 28 NOV 2024