

| | | | |
|--|------------------------|-----------------------------|---|
| WAAS CH 99746 W31A | APP CRS 331° | Rwy Idg TDZE Apt Elev | 5600 4230 4234 |
|--|------------------------|-----------------------------|---|

RNAV (GPS) RWY 31

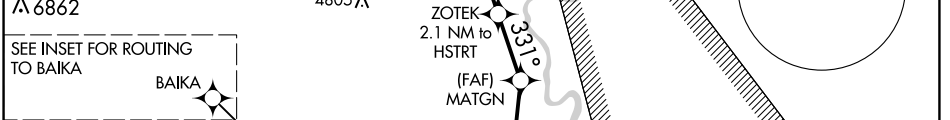
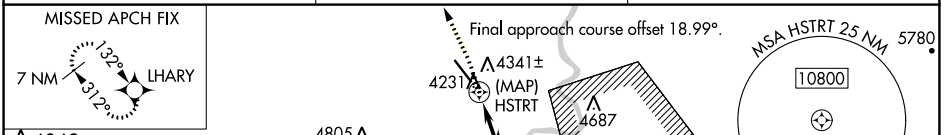
GREEN RIVER MUNI (U34)

RNP APCH - GPS.

NA Rwy 31 helicopter visibility reduction below 3/4 SM NA. Use Moab altimeter setting; when not received, use Hanksville altimeter setting and increase all MDAs 20 feet and LP visibility Cat C/D 1/2 SM, and Circling visibility Cat D 1/2 SM. Circling NA for Cats C and D northeast of Rwy 13-31.

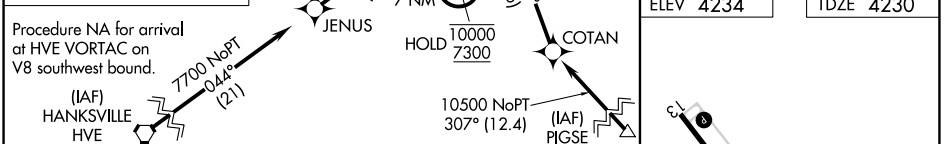
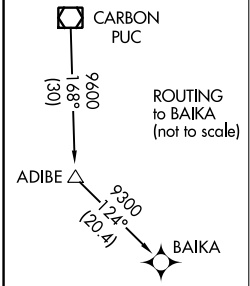
MISSED APPROACH: Climb to 4800, then climbing left turn to 9300 direct LHARY and hold, continue climb-in-hold to 9300.

| | | |
|----------------------------|---|-------------------------------|
| CNY ASOS 118.525 | SALT LAKE CENTER 133.6 269.25 | UNICOM 122.8 (CTAF) |
|----------------------------|---|-------------------------------|



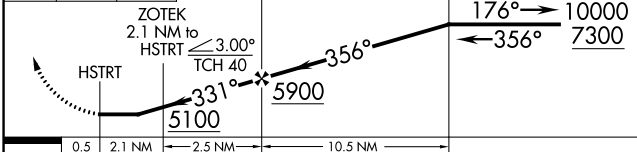
SEE INSET FOR ROUTING TO BAIKA

Procedure NA for arrival on PUC VOR/DME airway radials 095 CW 225.

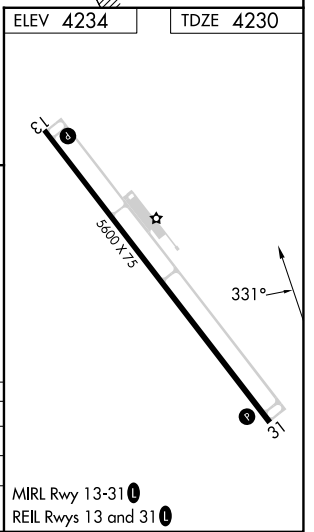


4800 9300 LHARY VGS1 and descent angles not coincident (VGS1 Angle 2.75/TCH 40).

7 NM Holding Pattern



| | | | | | | |
|----------|-------------|-------------|-----------------|-----------------|--|--|
| | 0.5 | 2.1 NM | 2.5 NM | 10.5 NM | | |
| CATEGORY | A | B | C | D | | |
| LP MDA | 4640-1 | 410 (500-1) | 4640-1 1/2 | 410 (500-1 1/2) | | |
| LNAV MDA | 4700-1 | 470 (500-1) | 4700-1 3/8 | 470 (500-1 3/8) | | |
| CIRCLING | 4800-1 | 4840-1 | 4840-1 3/4 | 5100-2 3/4 | | |
| | 566 (600-1) | 606 (700-1) | 606 (700-1 3/4) | 866 (900-2 3/4) | | |



SW-4, 31 OCT 2024 to 28 NOV 2024

SW-4, 31 OCT 2024 to 28 NOV 2024