

APP CRS	Rwy Idg	N/A
124°	TDZE	N/A
	Apt Elev	1130

RNAV (GPS)-A

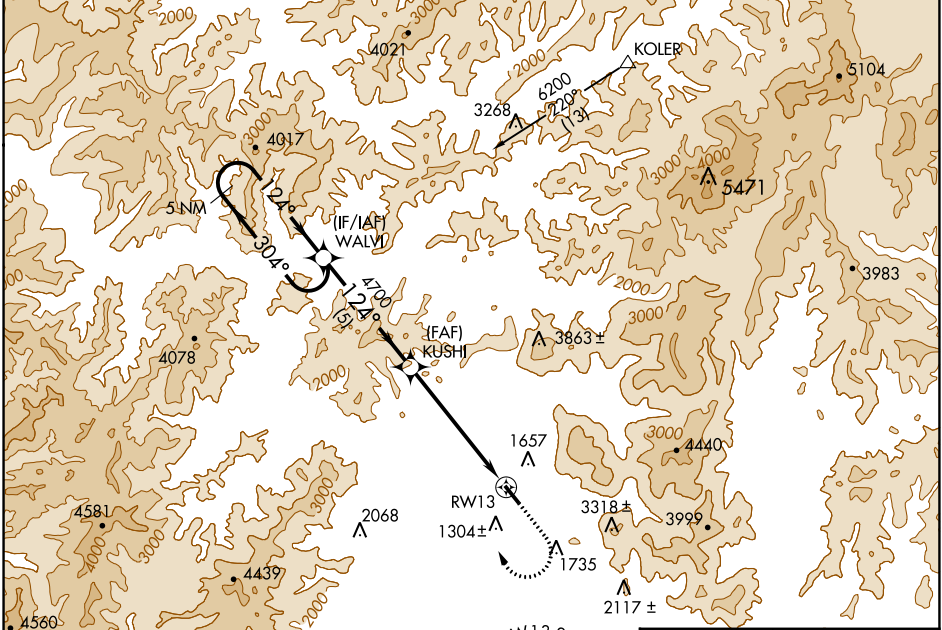
GRANTS PASS (3S8)

RNP APCH-GPS

NA Circling NA northeast of Rwy 13-31.
 Circling Rwy 13 NA at night.
 Rwy 13 helicopter visibility restriction below 1 SM NA.

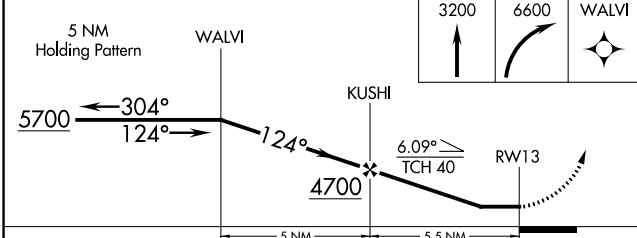
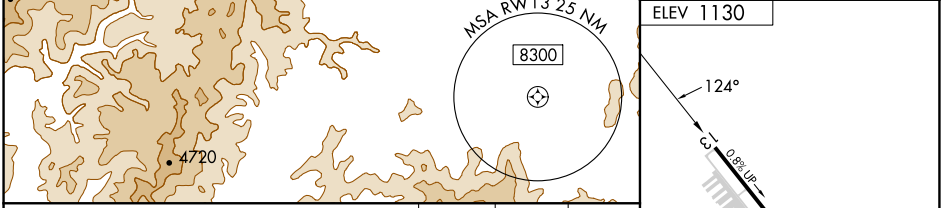
MISSED APPROACH: Climb to 3200 then climbing right turn to 6600 direct WALVI and hold, continue climb-in-hold to 6600.

AWOS-3PT 120.0	CASCADE APP CON * 124.3 379.9	UNICOM 122.8 (CTAF) 0
--------------------------	---	---------------------------------

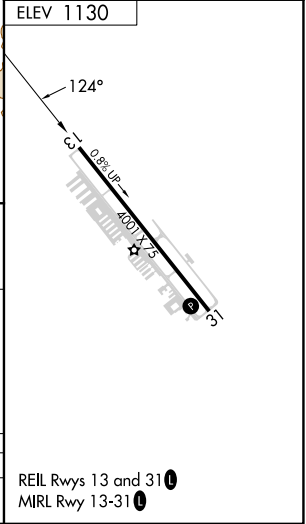


NW-1, 31 OCT 2024 to 28 NOV 2024

NW-1, 31 OCT 2024 to 28 NOV 2024



CATEGORY	A	B	C	D
CIRCLING	2920-1¼ 1790 (1800-1¼)	2920-1½ 1790 (1800-1½)		NA



REIL Rwy 13 and 31 **0**
 MIRL Rwy 13-31 **0**