

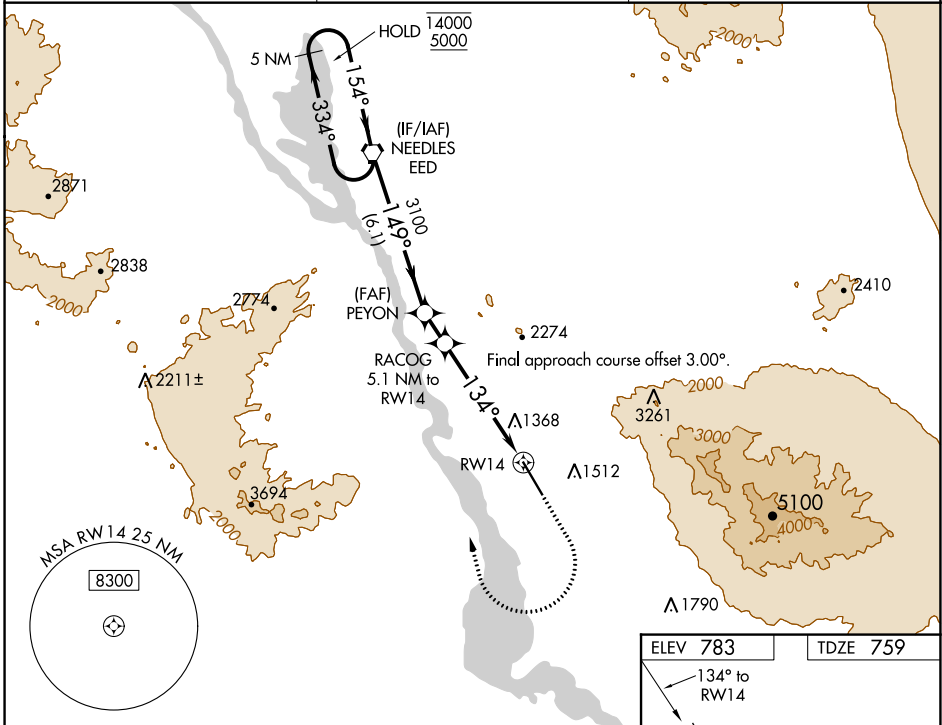
WAAS CH 53330 W14A	APP CRS 134°	Rwy Idg TDZE Apt Elev	8000 759 783
--	------------------------	-----------------------------	---

RNAV (GPS) RWY 14

LAKE HAVASU CITY (HII)

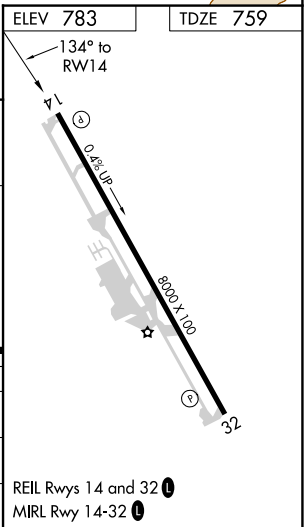
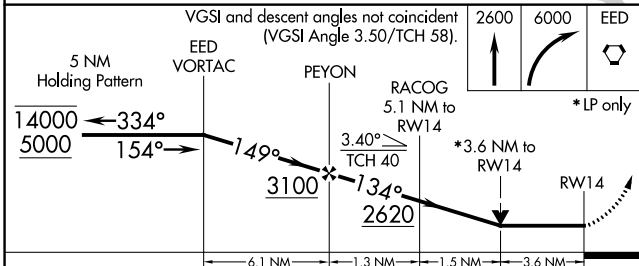
RNP APCH.	MISSED APPROACH: (Do not exceed 240K until EED VORTAC) Climb to 2600 then climbing right turn to 6000 direct EED VORTAC and hold, continue climb-in-hold to 6000.
<p>▼ Circling NA northeast of Rwy 14-32.</p> <p>▲ Rwy 14 helicopter visibility reduction below ¾ SM NA.</p>	

AWOS-3 119.025	LOS ANGELES CENTER 134.65 360.65	UNICOM 122.7 (CTAF) 0
--------------------------	--	---------------------------------



SW-4, 31 OCT 2024 to 28 NOV 2024

SW-4, 31 OCT 2024 to 28 NOV 2024



CATEGORY	A	B	C	D
LP MDA	2140-1¼ 1381 (1400-1¼)	2140-1½ 1381 (1400-1½)	2140-3	1381 (1400-3)
LNNAV MDA	2320-1¼ 1561 (1600-1¼)	2320-1½ 1561 (1600-1½)	2320-3	1561 (1600-3)
CIRCLING	2320-1¼ 1537 (1600-1¼)	2320-1½ 1537 (1600-1½)	2320-3	1537 (1600-3)