

VORTAC TUL 114.4 Chan 91	APP CRS 060°	Rwy Idg TDZE Apt Elev	N/A N/A 733
--	------------------------	-----------------------------	--

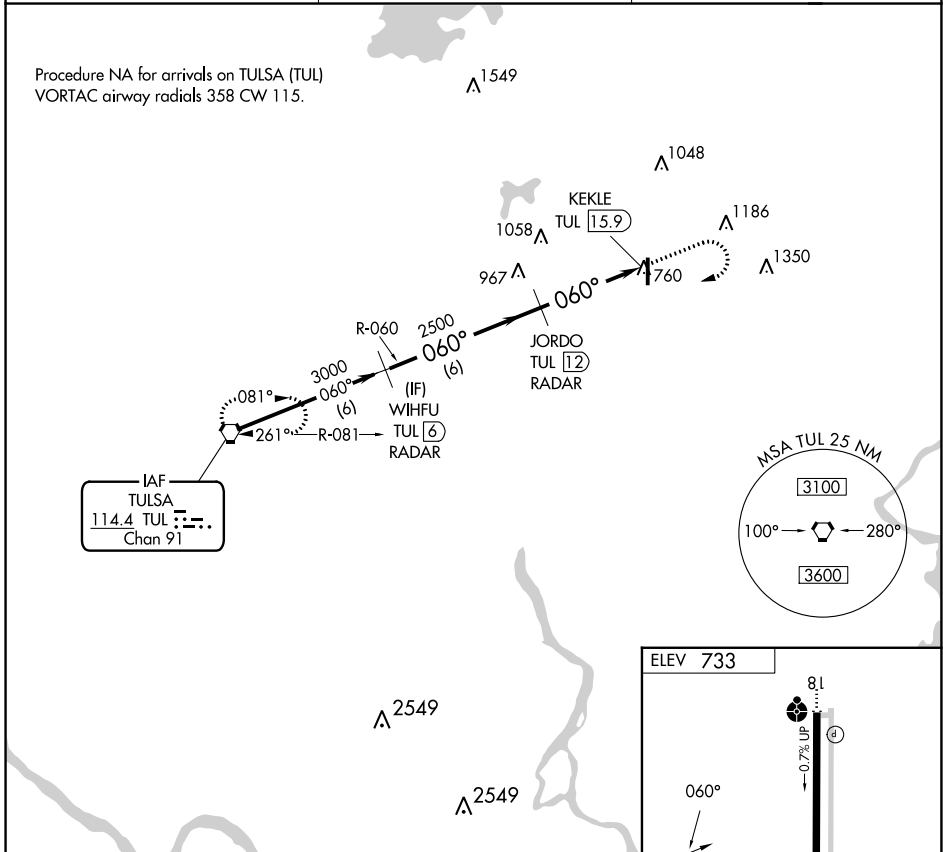
VOR/DME-B

CLAREMORE RGNL (GCM)

▽ If local altimeter setting not received, use Tulsa Intl altimeter setting and increase all MDAs 60 feet.

MISSED APPROACH: Climb to 2500 then climbing right turn to 3000 direct TUL VORTAC and hold.

AWOS-3PT 119.925	TULSA APP CON 119.1 360.825	UNICOM 122.7 (CTAF) 0
----------------------------	---------------------------------------	---------------------------------

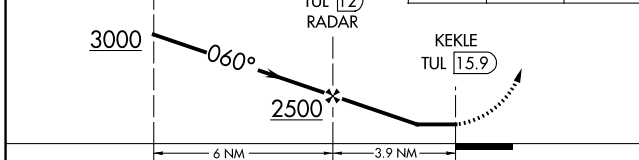


Procedure Turn NA

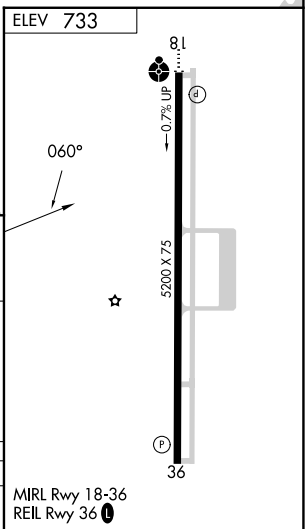
WIHFU TUL (6) RADAR

JORDO TUL (12) RADAR

KEKLE TUL (15.9)



CATEGORY	A	B	C	D
C CIRCLING	1260-1	527 (600-1)	1380-1 ³ / ₄ 647 (700-1 ³ / ₄)	NA



SC-1, 31 OCT 2024 to 28 NOV 2024

SC-1, 31 OCT 2024 to 28 NOV 2024