

WAAS CH <b>78340</b> <b>W32A</b>	APP CRS <b>323°</b>	Rwy Idg <b>4002</b> TDZE <b>45</b> Apt Elev <b>45</b>
--	------------------------	---

# RNAV (GPS) RWY 32

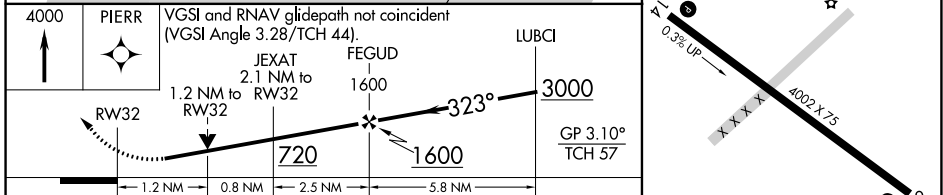
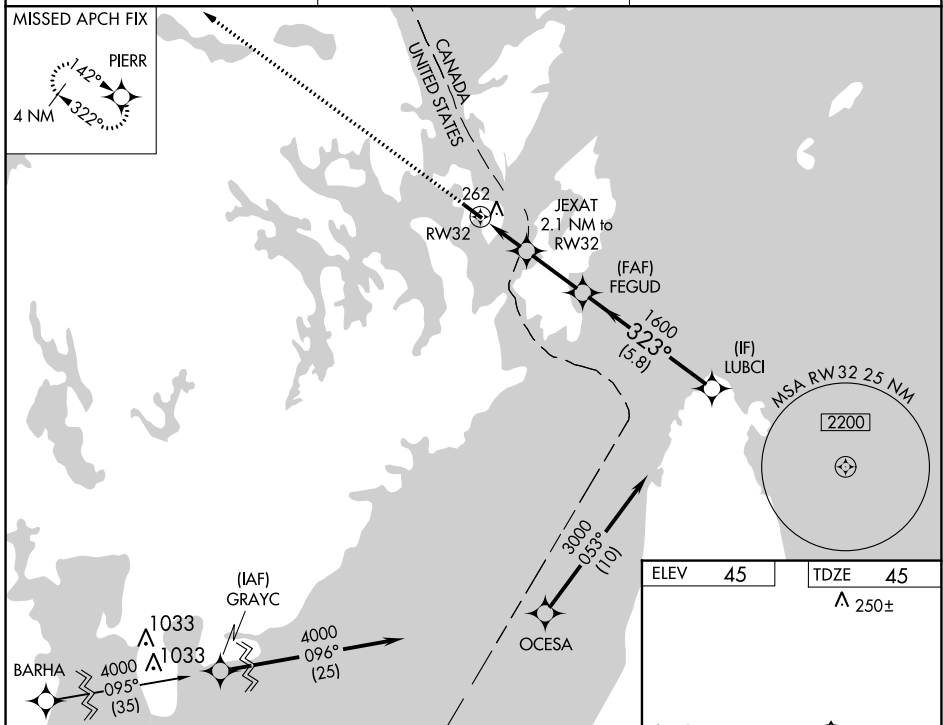
EASTPORT MUNI (EPM)

RNP APCH - GPS.

⚠ Circling Rwy 14 NA at night. For uncompensated Baro-VNAV systems, LNAV/VNAV NA below -15°C or above 54°C. Baro-VNAV and VDP NA when using Hancock County/Bar Harbor altimeter setting. Rwy 32 helicopter visibility reduction below 3/4 SM NA. When local altimeter setting not received, use Hancock County/Bar Harbor altimeter setting; increase LPV DA to 531 feet and all visibilities 3/8 SM; increase LNAV/VNAV DA to 576 feet and all visibilities 1/2 SM; increase all MDAs 160 feet and LNAV Cat C/D visibility 3/8 SM and Circling Cats C/D visibilities 3/4 SM.

⚠ MISSED APPROACH: Climb to 4000 direct PIERR and hold, continue climb-in-hold to 4000.

AWOS-AV <b>122.8</b>	BOSTON CENTER <b>124.25 290.5</b>	UNICOM <b>122.8 (CTAF) 0</b>
-------------------------	--------------------------------------	---------------------------------



CATEGORY	A		B		C		D
LPV DA	378-1 333 (400-1)						
LNAV/VNAV DA	423-1 378 (400-1)						
LNAV MDA	520-1	475 (500-1)	520-1 3/8	475 (500-1 3/8)			
CIRCLING	580-1	535 (600-1)	640-1 1/2	820-2 1/2			
			595 (600-1 1/2)	775 (800-2 1/2)			

MIRL Rwy 14-32 0  
REIL Rwy 14 and 32 0

NE-1, 31 OCT 2024 to 28 NOV 2024

NE-1, 31 OCT 2024 to 28 NOV 2024