

LOC/DME I-JQF <b>111.95</b> Chan <b>56(Y)</b>	APP CRS <b>196°</b>	Rwy Idg <b>6350</b> TDZE <b>699</b> Apt Elev <b>704</b>
---	------------------------	---

# ILS or LOC RWY 20

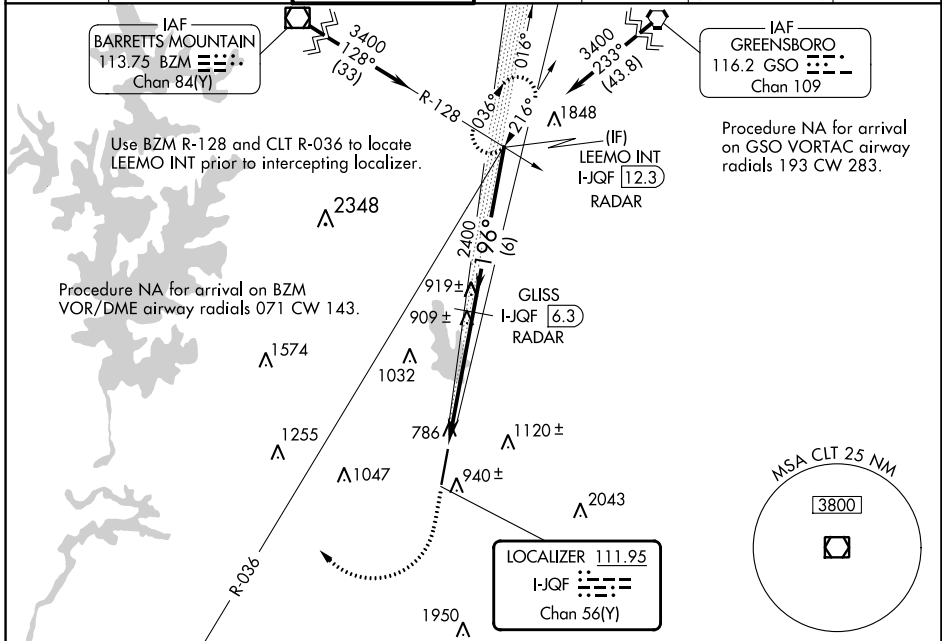
CONCORD-PADGETT RGNL (JQF)

DME or RADAR required for LOC only.

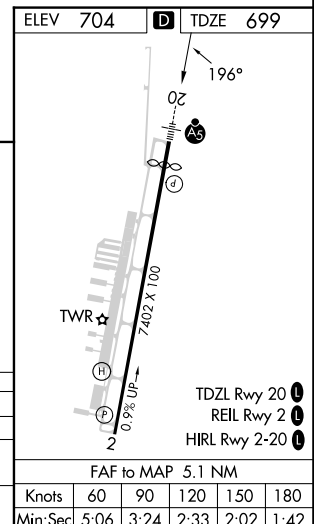
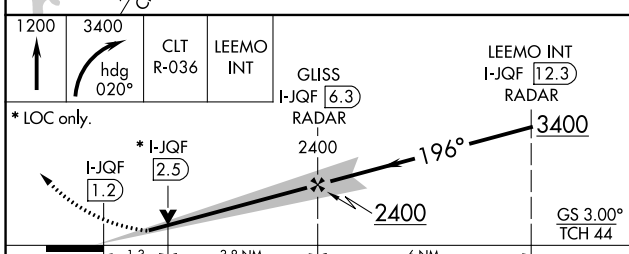
**MALS** MISSED APPROACH: Climb to 1200 then climbing right turn to 3400 on heading 020° and CLT VOR/DME R-036 to LEEMO INT/I-JQF 12.3 DME/RADAR and hold.

**NA** For inop ALS, increase S-LOC 20 Cat A/B visibility to 1 SM, Cat C/D visibility to 1 3/4 SM. Rwy 20 helicopter visibility reduction below 3/4 SM NA. S-ILS inop table does not apply.

ATIS* <b>133.675</b>	CHARLOTTE APP CON <b>128.325 307.8</b>	CONCORD TOWER* <b>134.65 (CTAF)</b>	GND CON <b>121.85</b>	CLNC DEL <b>118.55</b>	CLNC DEL <b>127.25</b> (when twr closed)	UNICOM <b>122.95</b>
-------------------------	---	--	--------------------------	---------------------------	--	-------------------------



ELEV 704	TDZE 699
----------	----------



CATEGORY	A	B	C	D
S-ILS 20		1026-3/4	327 (400-3/4)	
S-LOC 20	1160-3/4	461 (500-3/4)	1160-1	461 (500-1)
CIRCLING	1300-1	596 (600-1)	1480-2 1/4 776 (800-2 1/4)	1480-2 1/2 776 (800-2 1/2)

Knots	60	90	120	150	180
Min:Sec	5:06	3:24	2:33	2:02	1:42

SE-2, 31 OCT 2024 to 28 NOV 2024

SE-2, 31 OCT 2024 to 28 NOV 2024