

(KER4.KER) 24081  
**KERMIT FOUR DEPARTURE**

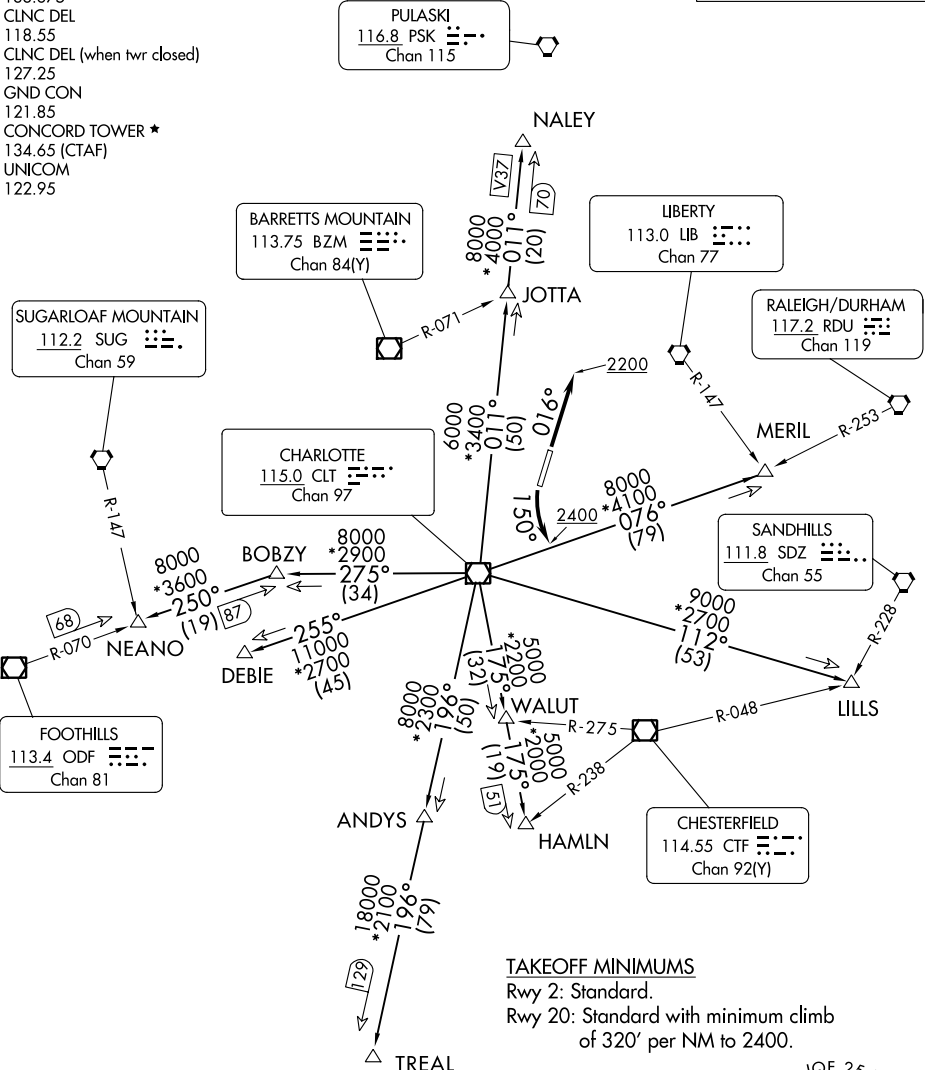
AL-9155 (FAA)

CONCORD-PADGETT RGNL (JQF)  
 CONCORD, NORTH CAROLINA

CHARLOTTE DEP CON  
 128.325 307.8  
 ATIS ★  
 133.675  
 CLNC DEL  
 118.55  
 CLNC DEL (when twr closed)  
 127.25  
 GND CON  
 121.85  
 CONCORD TOWER ★  
 134.65 (CTAF)  
 UNICOM  
 122.95

RADAR and DME required.

**TOP ALTITUDE:  
 3000**

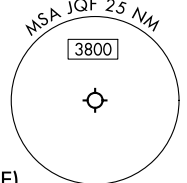


SE-2, 31 OCT 2024 to 28 NOV 2024

SE-2, 31 OCT 2024 to 28 NOV 2024

**TAKEOFF MINIMUMS**

Rwy 2: Standard.  
 Rwy 20: Standard with minimum climb  
 of 320' per NM to 2400.



NOTE: For turbo jet aircraft only.  
 NOTE: Upon reaching 10000 MSL, accelerate to  
 and maintain 280K, if unable advise ATC.  
 NOTE: Transponder code will be issued via Concord ATCT  
 or Charlotte clearance delivery.

NOTE: Chart not to scale.

(CONTINUED ON FOLLOWING PAGE)

**KERMIT FOUR DEPARTURE**  
 (KER4.KER) 21MAR24

CONCORD, NORTH CAROLINA  
 CONCORD-PADGETT RGNL (JQF)