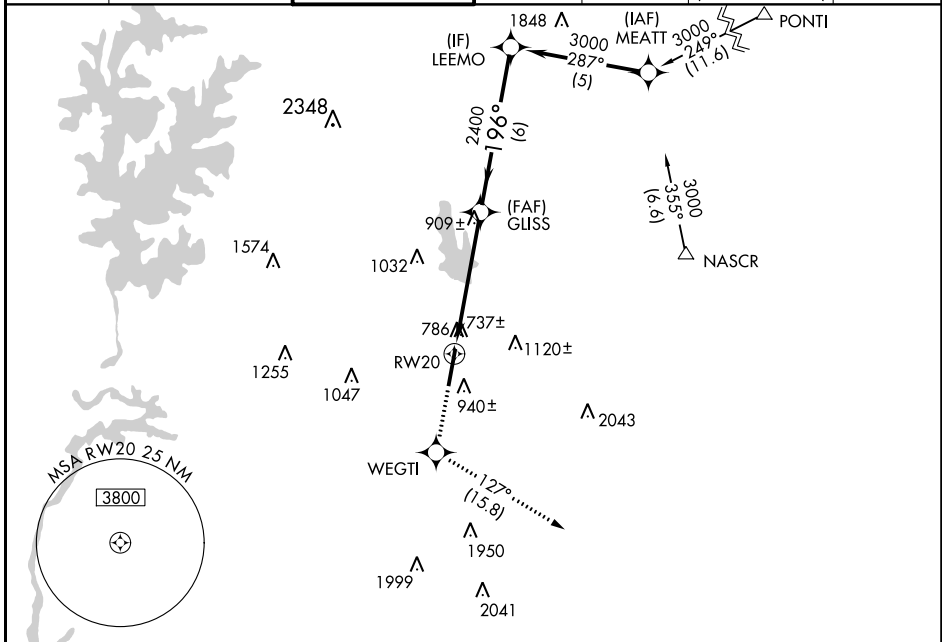


WAAS CH 56499 W20A	APP CRS 196°	Rwy Idg TDZE Apt Elev	6350 699 704
--	------------------------	-----------------------------	---

RNAV (GPS) RWY 20

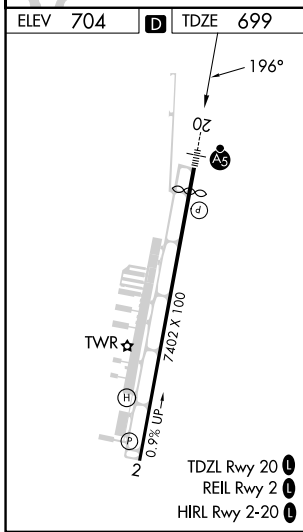
CONCORD-PADGETT RGNL (JQF)

RNP APCH-GPS.		MALSR		MISSED APPROACH: Climb to 3000 direct WEGTI and on track 127° to LOCAS and hold.		
<p>V For uncompensated Baro-VNAV systems, LNAV/VNAV NA below -16°C or above 54°C. For inop ALS, increase LNAV/VNAV visibility all Cats to 1½ SM. Rwy 20 helicopter visibility reduction below ¾ SM NA.</p>		<p>A5</p>				
ATIS★ 133.675	CHARLOTTE APP CON 128.325 307.8	CONCORD TOWER★ 134.65 (CTAF)	GND CON 121.85	CLNC DEL 118.55	CLNC DEL 127.25 (when twr closed)	UNICOM 122.95



SE-2, 31 OCT 2024 to 28 NOV 2024

SE-2, 31 OCT 2024 to 28 NOV 2024



3000	WEGTI	LOCAS	LEEMO	
↑	✧	△		
	tr 127°			
*LNAV only.				
RW20	*1.8 NM to RW20	GLISS 2400	3000	
1.8 NM		3.3 NM	6 NM	
GP 3.00° TCH 44				
CATEGORY	A	B	C	D
LPV DA		1026-¾	327 (400-¾)	
LNAV/VNAV DA		1222-1¼	523 (600-1¼)	
LNAV MDA	1300-¾	601 (600-¾)	1300-1⅜	601 (600-1⅜)
C CIRCLING	1300-1	596 (600-1)	1480-2¼	1480-2½
			776 (800-2¼)	776 (800-2½)