

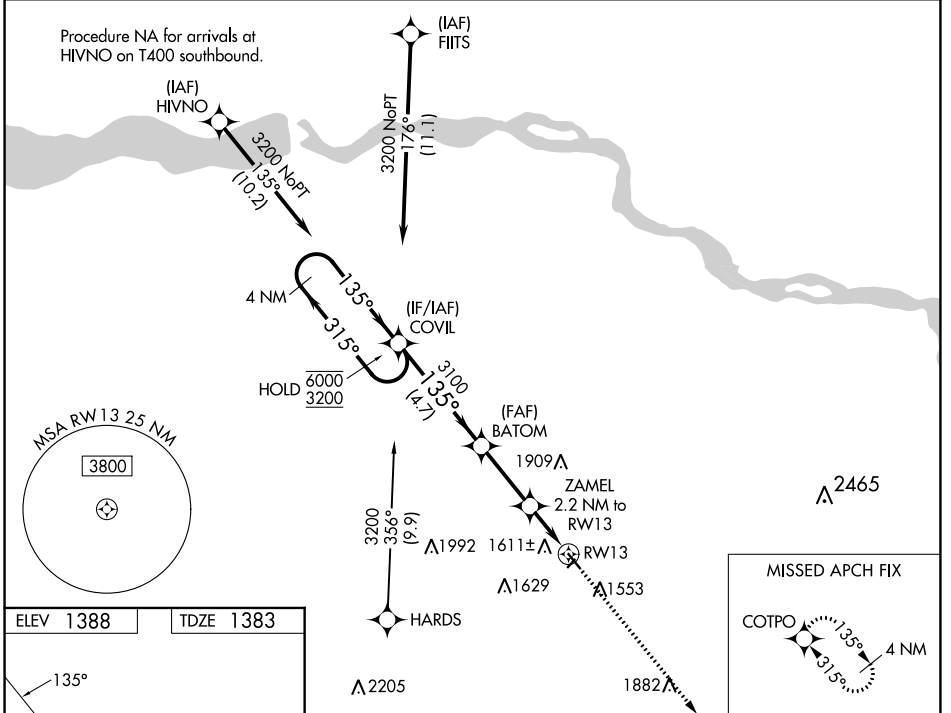
WAAS CH <b>53722</b> <b>W13A</b>	APP CRS <b>135°</b>	Rwy Idg TDZE Apt Elev	<b>3950</b> <b>1383</b> <b>1388</b>
--	------------------------	-----------------------------	---

# RNAV (GPS) RWY 13

HARTINGTON MUNI/BUD BECKER FLD (ØB4)

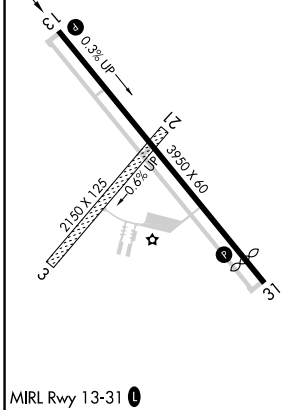
RNP APCH - GPS.	<p>▼ Rwy 13 helicopter visibility reduction below ¼ SM NA. Baro-VNAV NA.</p> <p>▲ NA Use YKN altimeter setting; when not received, use LCG altimeter setting and increase LPV DA to 1831 feet. Increase LNAV/VNAV DA to 2230 feet. Increase LNAV MDA 20 feet.</p>	MISSED APPROACH: Climb to 3200 direct COTPO and hold.
-----------------	---	---

YKN AWOS-3PT <b>119.05</b>	MINNEAPOLIS CENTER <b>125.025 235.625</b>	CTAF <b>122.90</b>
-------------------------------	--	-----------------------



NC-2, 31 OCT 2024 to 28 NOV 2024

NC-2, 31 OCT 2024 to 28 NOV 2024



VGS1 and RNAV glidepath not coincident (VGS1 Angle 4.00/TCH 52).		3200	COTPO
COVIL		BATOM	
4 NM Holding Pattern		3100	ZAMEL 2.2 NM to RWY 13
6000 ← 315°		3100	RWY 13
3200 → 135°		2140	
GP 3.20°			
TCH 45			
CATEGORY	A	B	C
LPV DA	1824-1 ⅜	441 (500-1 ⅜)	NA
LNAV/VNAV DA	2223-2 ½	840 (900-2 ½)	NA
LNAV MDA	2000-1	617 (700-1)	NA