

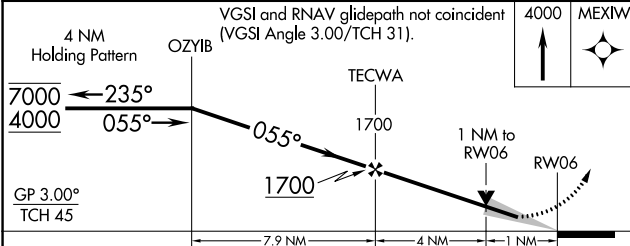
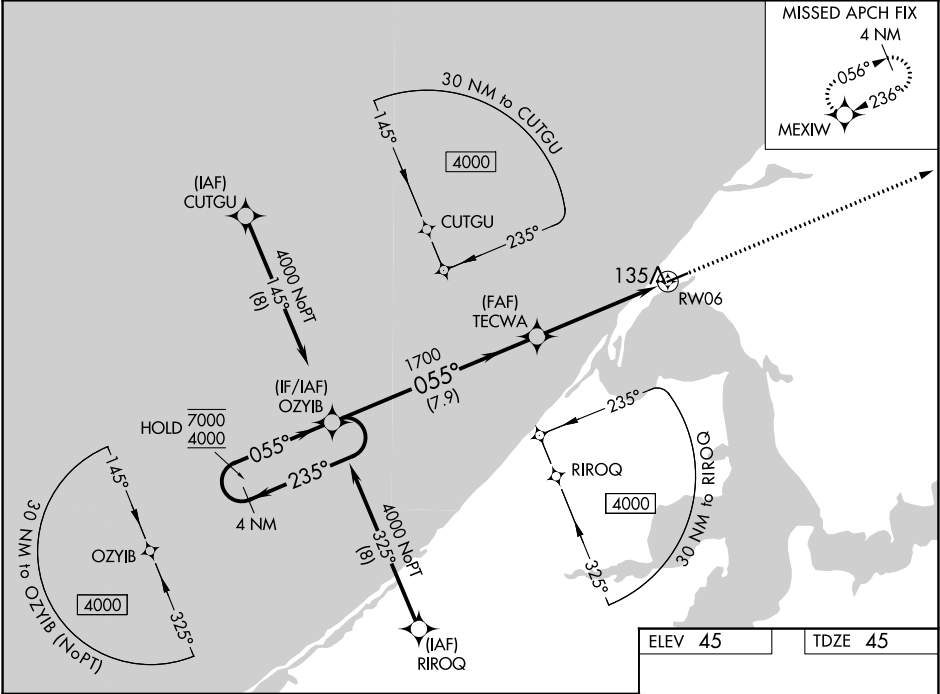
WAAS CH <b>50542</b> <b>W06A</b>	APP CRS <b>055°</b>	Rwy Idg TDZE Apt Elev	<b>4494</b> <b>45</b> <b>45</b>
--	------------------------	-----------------------------	---------------------------------------

# RNAV (GPS) RWY 6

WAINWRIGHT (AWI) (PAWI)

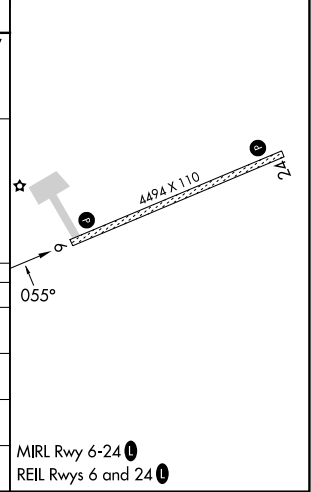
RNP APCH - GPS.		MISSED APPROACH: Climb to 4000 direct MEXIW and hold, continue climb-in-hold to 4000.	
For un-compensated Baro-VNAV systems, LNAV/VNAV NA below -20°C or above 54°C.			

ASOS-3 <b>132.25</b>	ANCHORAGE CENTER <b>135.3 239.25</b>	BARROW RADIO <b>122.5</b>	CTAF <b>122.8</b>
-------------------------	---	------------------------------	----------------------



ELEV 45	TDZE 45
---------	---------

CATEGORY	A	B	C	D
LPV DA		295-1	250 (300-1)	
LNAV/VNAV DA		316-1	271 (300-1)	
LNAV MDA		400-1	355 (400-1)	
CIRCLING	460-1 415 (500-1)	500-1 455 (500-1)	500-1½ 455 (500-1½)	600-2 555 (600-2)



AK, 31 OCT 2024 to 26 DEC 2024

AK, 31 OCT 2024 to 26 DEC 2024