

WAAS CH <b>99425</b> <b>W23A</b>	APP CRS <b>229°</b>	Rwy Idg <b>4589</b> TDZE <b>45</b> Apt Elev <b>45</b>
--	------------------------	---

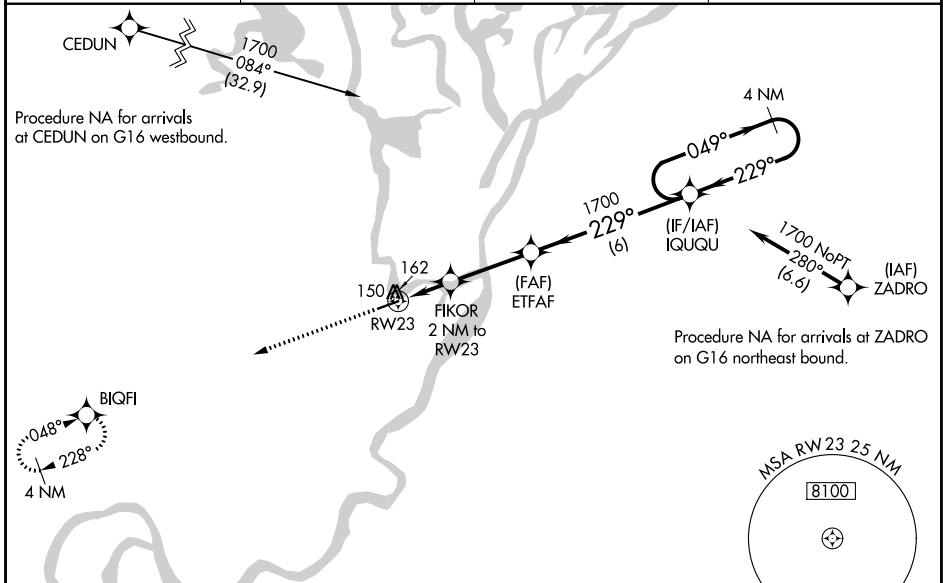
# RNAV (GPS) RWY 23

NUIQSUT (AQT) (PAQT)

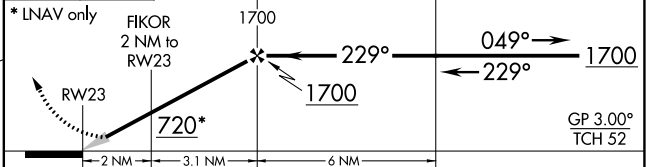
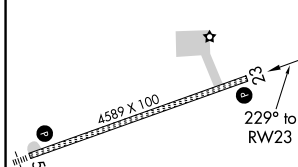
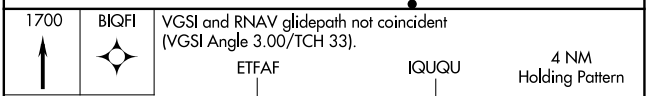
**⚠** For uncompensated Baro-VNAV systems, LNAV/VNAV NA below -25°C (-13°F) or above 54°C (130°F). DME/DME RNP-0.3 NA. Baro-VNAV NA with Deadhorse altimeter setting. When local altimeter setting not received, use Deadhorse altimeter setting and increase all DA 123 feet and all MDA 140 feet, increase LPV all Cats and LNAV Circling Cat C visibility ¼ mile, increase LNAV/VNAV all Cats and LNAV Cat C visibility ½ mile.

**MISSED APPROACH:**  
Climb to 1700 direct  
BIQFI and hold.

ASOS <b>135.35</b>	ANCHORAGE CENTER <b>119.4</b>	DEADHORSE RADIO <b>122.5</b>	CTAF <b>122.8</b>
-----------------------	----------------------------------	---------------------------------	----------------------



ELEV 45	TDZE 45
---------	---------



CATEGORY	A	B	C	D
LPV DA	295-1	250 (300-1)		NA
LNAV/VNAV DA	369-1	324 (400-1)		NA
LNAV MDA	480-1	435 (500-1)	480-1 3/8 435 (500-1 3/8)	NA
CIRCLING	520-1	475 (500-1)	520-1 1/2 475 (500-1 1/2)	NA

MIRA Rwy 5-23 **Ⓛ**  
REIL Rwy 23 **Ⓛ**

AK, 31 OCT 2024 to 26 DEC 2024

AK, 31 OCT 2024 to 26 DEC 2024