

APP CRS	Rwy Idg	<b>4003</b>
<b>265°</b>	TDZE	<b>10</b>
	Apt Elev	<b>14</b>

# RNAV (GPS) RWY 26

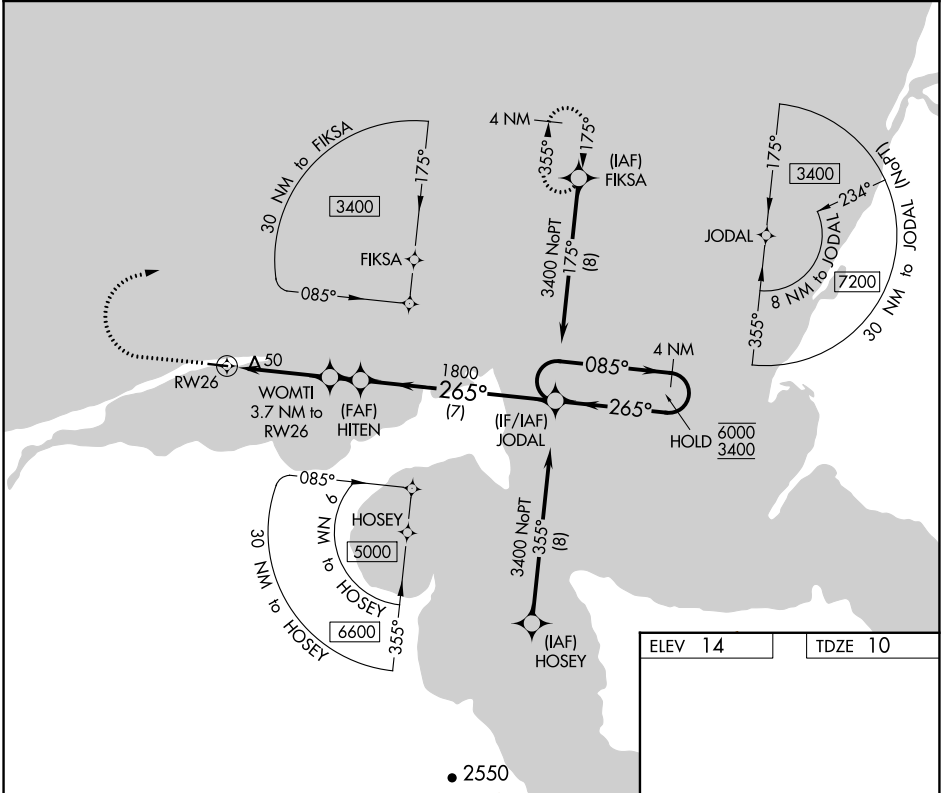
NELSON LAGOON (OUL) (PAOU)

**RNP APCH.**

Procedure NA at night.  
Rwy 26 helicopter visibility reduction below 1 SM NA.

**MISSED APPROACH:** Climb to 500, then climbing right turn to 3400 direct FIKSA and hold. Continue climb in hold to 3400.

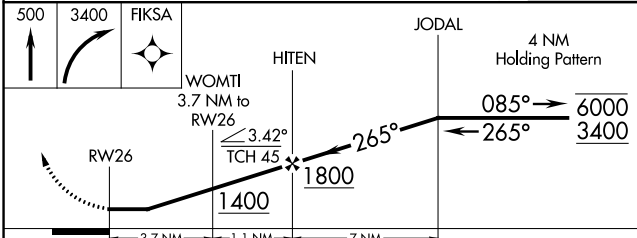
AWOS-3P <b>119,025</b>	ANCHORAGE CENTER <b>118.5 278.3</b>	CTAF <b>122.90</b>
---------------------------	--	-----------------------



AK, 31 OCT 2024 to 26 DEC 2024

AK, 31 OCT 2024 to 26 DEC 2024

ELEV 14	TDZE 10
---------	---------



<table border="1"> <tr> <th>CATEGORY</th> <td>A</td> <td>B</td> <td>C</td> <td>D</td> </tr> <tr> <th>LNVA MDA</th> <td colspan="4">300-1 290 (300-1)</td> </tr> <tr> <th>CIRCLING</th> <td>520-1</td> <td>506 (600-1)</td> <td>520-1½ 506 (600-1½)</td> <td>580-2 566 (600-2)</td> </tr> </table>	CATEGORY	A	B	C	D	LNVA MDA	300-1 290 (300-1)				CIRCLING	520-1	506 (600-1)	520-1½ 506 (600-1½)	580-2 566 (600-2)	<p>MRL Rwy 8-26</p>
CATEGORY	A	B	C	D												
LNVA MDA	300-1 290 (300-1)															
CIRCLING	520-1	506 (600-1)	520-1½ 506 (600-1½)	580-2 566 (600-2)												