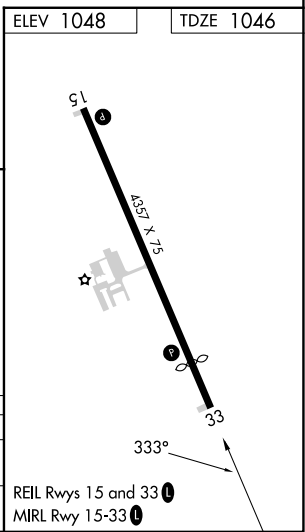
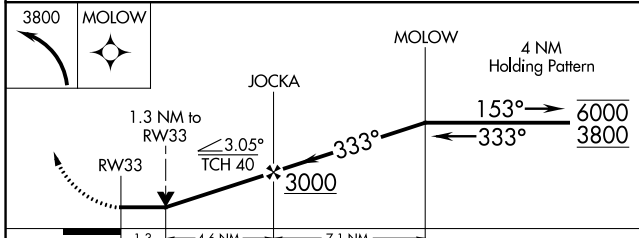
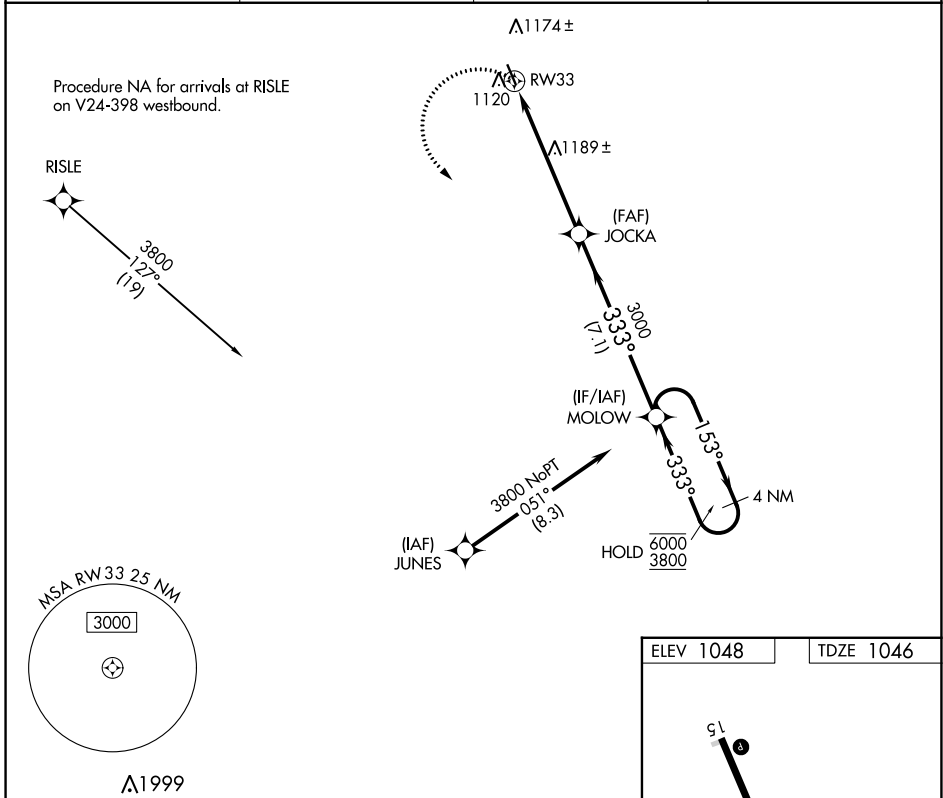


APP CRS	Rwy Idg	<b>3715</b>
<b>333°</b>	TDZE	<b>1046</b>
	Apt Elev	<b>1048</b>

# RNAV (GPS) RWY 33

GRANITE FALLS MUNI/LENZEN-ROE-FAGEN MEML FLD (GDB)

RNP APCH.		MISSED APPROACH: Climbing left turn to 3800 direct to MOLOW and hold.	
AWOS-3	MINNEAPOLIS CENTER	GCO	UNICOM
<b>120.1</b>	<b>127.1 290.2</b>	<b>121.725</b>	<b>122.8 (CTAF) 0</b>



CATEGORY	A	B	C	D
LNVA MDA	1480-1	434 (500-1)	1480-1½ 434 (500-1¼)	1480-1½ 434 (500-1½)
CIRCLING	1540-1 492 (500-1)	1580-1 532 (600-1)	1580-1½ 532 (600-1½)	1700-2 652 (700-2)

# RNAV (GPS) RWY 33

NC-1, 31 OCT 2024 to 28 NOV 2024

NC-1, 31 OCT 2024 to 28 NOV 2024