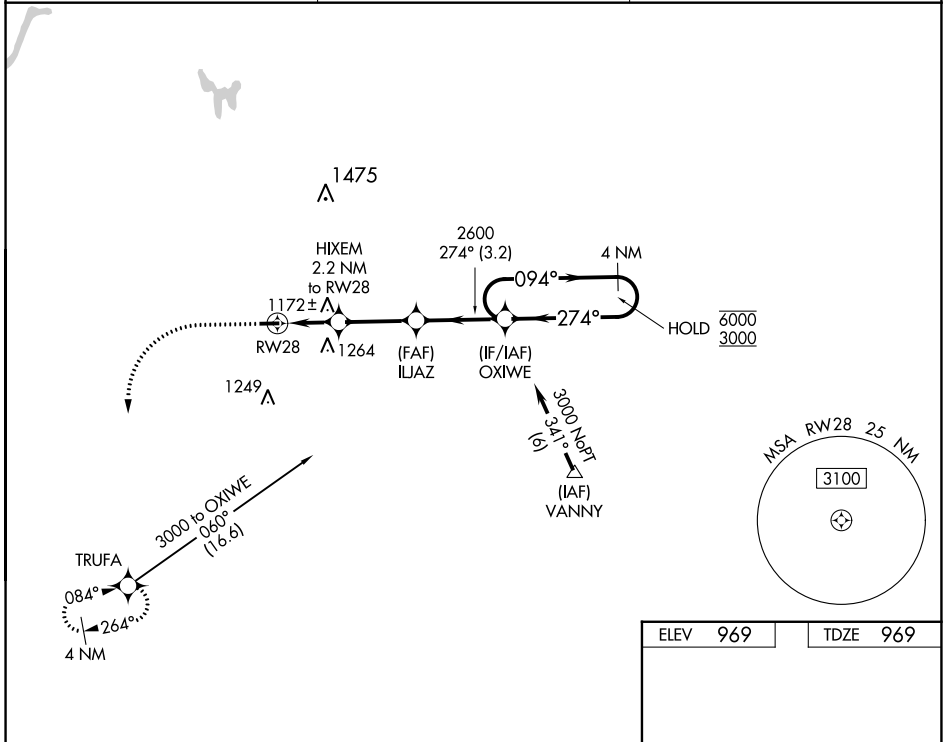


APP CRS	Rwy ldg	3499
274°	TDZE	969
	Apt Elev	969

RNAV (GPS) RWY 28

LAKEVIEW/GRIFFITH FLD (13C)

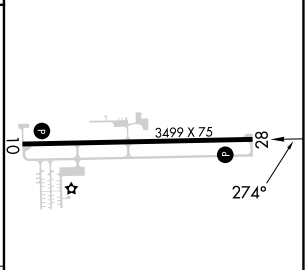
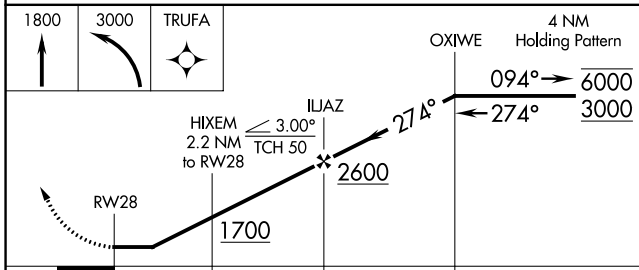
RNP APCH - GPS.		MISSED APPROACH: Climb to 1800 then climbing left turn to 3000 direct TRUFA and hold.
<p>▽ Procedure NA at night. Use Big Rapids altimeter setting; when not received, use Mount Pleasant altimeter setting and increase all MDAs 60 feet. Rwy 28 helicopter visibility reduction below 1 SM NA.</p> <p>△ NA</p>	<p>RQB AWOS-3P 125.875</p>	<p>GREAT LAKES APP CON * 124.6 257.6</p>
		<p>UNICOM 122.8 (CTAF) 0</p>



EC-1, 31 OCT 2024 to 28 NOV 2024

EC-1, 31 OCT 2024 to 28 NOV 2024

ELEV	969	TDZE	969
------	-----	------	-----



CATEGORY	A	B	C	D
LNVA MDA	1480-1	511 (600-1)	NA	
C CIRCLING	1480-1 511 (600-1)	1580-1 611 (700-1)	NA	

MIRL Rwy 10-28 0
REIL Rwy 10 and 28 0