

APP CRS 306°	Rwy Idg TDZE Apt Elev	3199 888 888
------------------------	-----------------------------	---

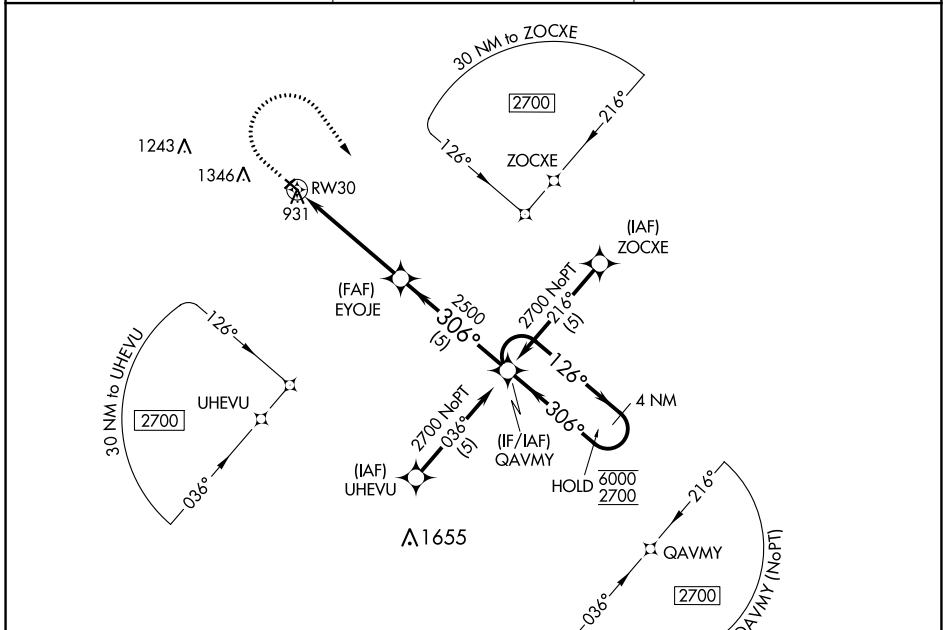
RNAV (GPS) RWY 30

WARREN MUNI (D37)

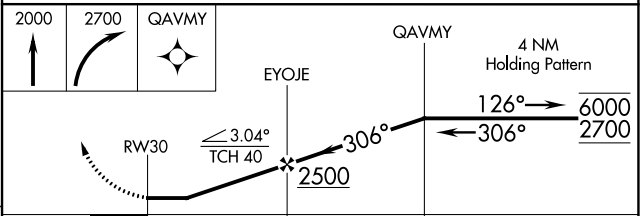
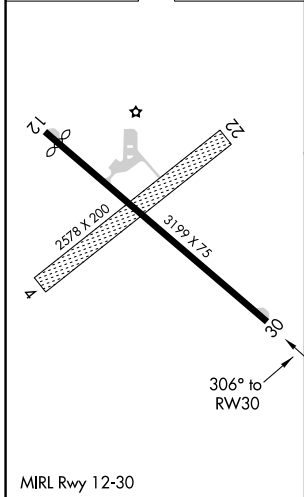
RNP APCH. MISSED APPROACH: Climb to 2000 then climbing right turn to 2700 direct QAVMY and hold.

Circling NA to Rws 4 and 22. Rwy 30 helicopter visibility reduction below 3/4 SM NA. Use Crookston altimeter setting.

CKN AWOS-3 126.425	GRAND FORKS APP CON ★ 118.1 318.1	UNICOM 122.8 (CTAF)
------------------------------	---	-------------------------------



ELEV 888	D	TDZE 888
----------	----------	----------



CATEGORY	A	B	C	D
LNAV MDA	1480-1	592 (600-1)	NA	
CIRCLING	1480-1	1760-1 1/4	NA	
	592 (600-1)	872 (900-1 1/4)		

NC-1, 31 OCT 2024 to 28 NOV 2024

NC-1, 31 OCT 2024 to 28 NOV 2024