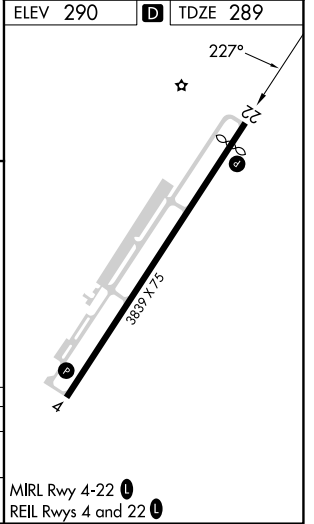
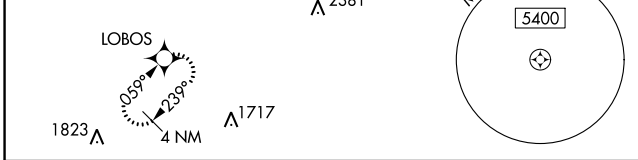
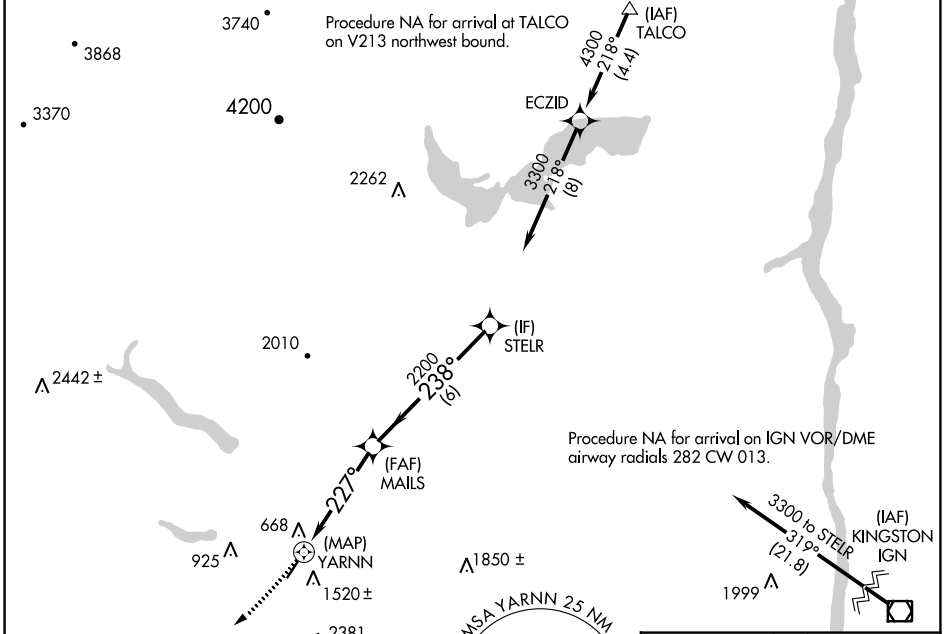


APP CRS	Rwy Idg	3530
227°	TDZE	289
	Apt Elev	290

RNAV (GPS) RWY 22

JOSEPH Y RESNICK (N89)

RNP APCH - GPS.		MISSED APPROACH: Climbing right turn to 4000 direct LOBOS and hold, continue climb-in-hold to 4000.
<p>▼ Circling NA southeast of Rwy 4-22. Procedure NA at night. Rwy 22 helicopter visibility reduction below 1 SM NA. Use New York Stewart Intl altimeter setting, -6° C when not received, use Poughkeepsie altimeter setting.</p> <p>▲ NA</p> <p>⊖ -6° C</p>		
SWF ASOS	NEW YORK APP CON	UNICOM
124.575	132.75 363.1	122.8 (CTAF) 1



4000	LOBOS	Visual Segment - Obstacles.		
		MAILS	STEALR	3300
YARNN		2200	238°	
0.5	4.5 NM	6 NM		
CATEGORY	A	B	C	D
LNVA MDA	1980-1¼ 1691 (1700-1¼)	1980-1½ 1691 (1700-1½)	NA	
Ⓢ CIRCLING	1980-1¼ 1690 (1700-1¼)	1980-1½ 1690 (1700-1½)	NA	

NE-2, 31 OCT 2024 to 28 NOV 2024

NE-2, 31 OCT 2024 to 28 NOV 2024