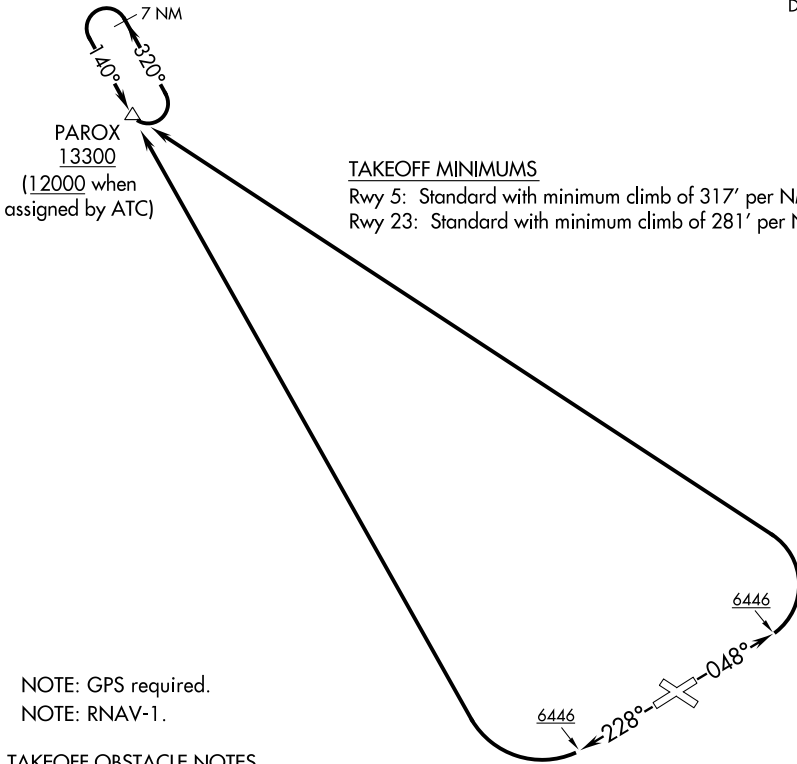


NUCLA TWO DEPARTURE (OBSTACLE) (RNAV)

DENVER CENTER
127.1



TAKEOFF OBSTACLE NOTES

- Rwy 5: Tree 5' from DER, 187' left of centerline, 5950' MSL.
 Vehicle on road and vegetation beginning 10' from DER, 175' right of centerline, up to 5964' MSL.
 Vehicle on road and trees beginning 49' from DER, 87' left of centerline, up to 5955' MSL.
 Vehicle on road, 167' from DER, 102' left of centerline, 5959' MSL.
 Vehicle on road and trees beginning 230' from DER, 8' right of centerline, up to 5965' MSL.
 Vehicle on road 269' from DER, 42' left of centerline, 5960' MSL.
- Rwy 23: Vehicle on road and trees beginning 9' from DER, 27' right of centerline, up to 5910' MSL.
 Pole 11' from DER, 27' left of centerline, 5900' MSL.
 Vehicle on road 19' from DER, 329' left of centerline, 5906' MSL.
 Vehicle on road and trees beginning 30' from DER, 82' left of centerline, up to 5913' MSL.

NOTE: Chart not to scale.

DEPARTURE ROUTE DESCRIPTION

TAKEOFF RUNWAY 5: Climb on heading 048° to 6446, then climbing left turn to 13300 direct PAROX, thence . . .

TAKEOFF RUNWAY 23: Climb on heading 228° to 6446, then climbing right turn to 13300 direct PAROX, thence . . .

. . . climb in PAROX holding pattern to cross PAROX at or above 13300 (12000 when assigned by ATC) before proceeding on course.