

APP CRS <b>126°</b>	Rwy Idg TDZE Apt Elev	<b>N/A</b> <b>N/A</b> <b>5945</b>
------------------------	-----------------------------	---

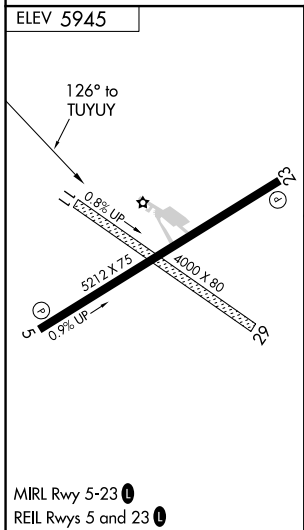
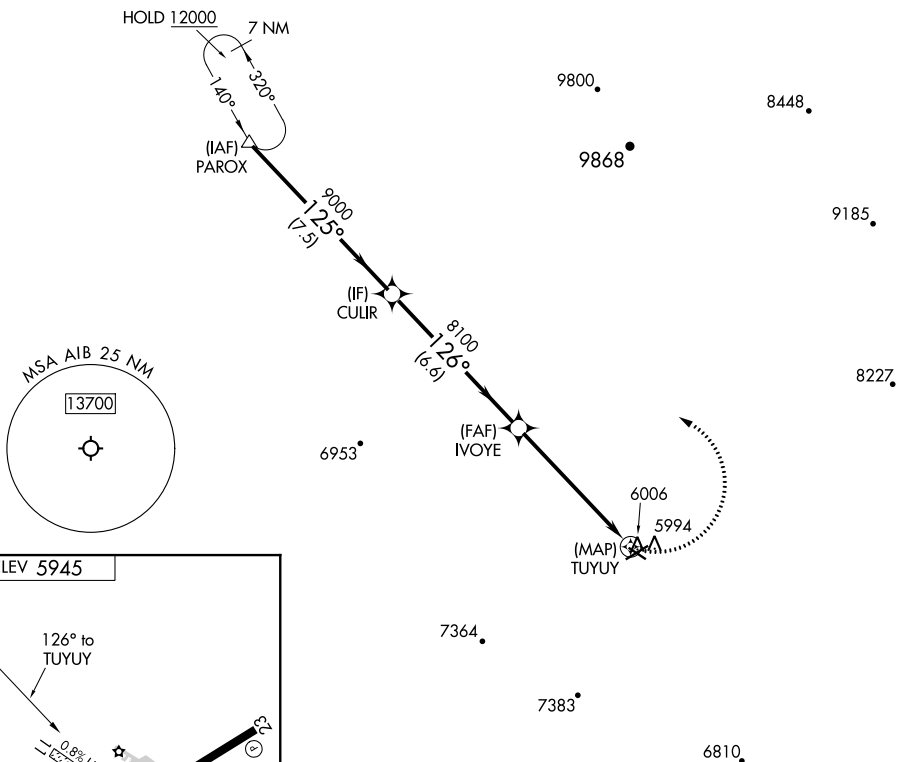
# RNAV (GPS)-A

HOPKINS FLD (AIB)

RNP APCH-GPS.	MISSED APPROACH: Climbing left turn to 12000 direct PAROX and hold, continue climb-in-hold to 12000.
<p><b>▽</b> Circling NA to Rwys 11 and 29. Circling Rwy 23 NA at night.</p> <p><b>⚠</b> When local altimeter setting not received, procedure NA.</p>	

AWOS-3 <b>132.525</b>	DENVER CENTER <b>127.1</b>	UNICOM <b>122.8 (CTAF)</b>
--------------------------	-------------------------------	-------------------------------

All arrivals on V244 descend to 12000 in PAROX holding pattern before departing PAROX.  
NoPT for arrival at PAROX on V391 southbound.



	PAROX	CULIR	IVOYE	TUYUY
	12000	9000	8100	
	7.5 NM	6.6 NM	5.8 NM	
CATEGORY	A	B	C	D
<b>☑</b> CIRCLING	6320-1 375 (400-1)	6400-1 455 (500-1)	6800-2½ 855 (900-2½)	NA

SW-1, 31 OCT 2024 to 28 NOV 2024

SW-1, 31 OCT 2024 to 28 NOV 2024