

WAAS CH <b>86241</b> <b>W20A</b>	APP CRS <b>203°</b>	Rwy Idg TDZE Apt Elev	<b>4966</b> <b>776</b> <b>776</b>
--	------------------------	-----------------------------	---

# RNAV (GPS) RWY 20

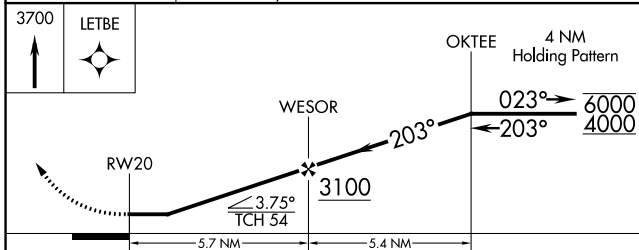
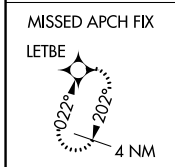
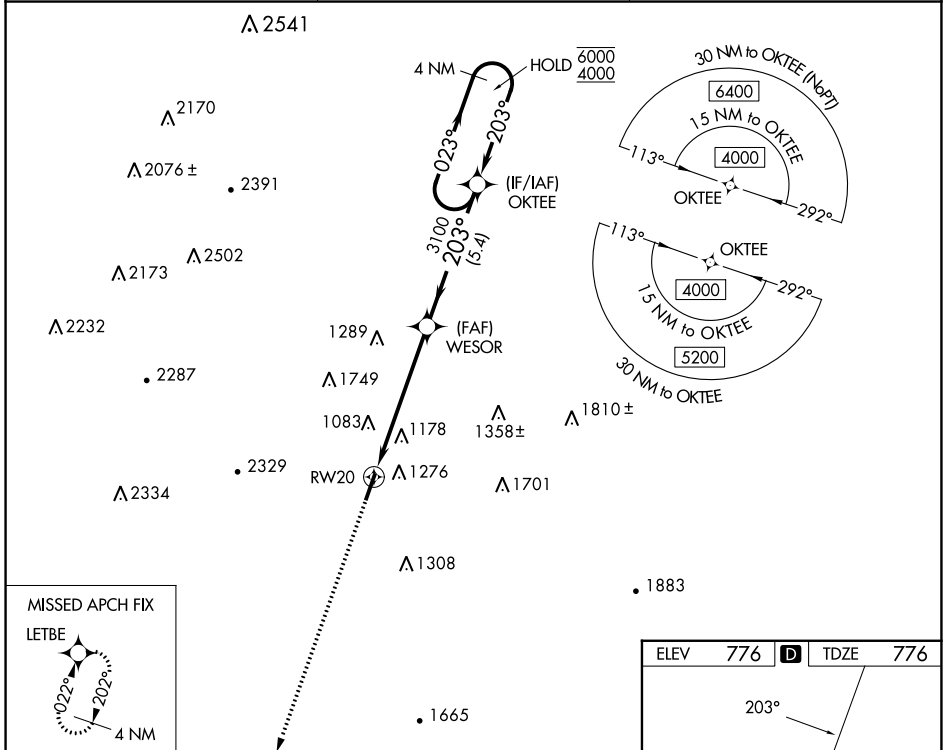
BARWICK LAFAYETTE (9A.5)

RNP APCH - GPS.

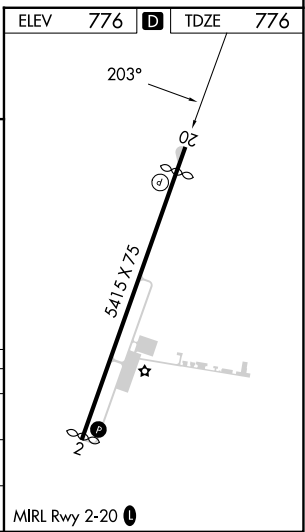
**⚠** Procedure NA at night. Rwy 20 helicopter visibility reduction below 1 SM NA.  
**⚠** When local altimeter setting not received, use Chattanooga altimeter setting and increase all MDAs 80 feet.

MISSED APPROACH: Climb to 3700 direct LETBE and hold.

AWOS-3 <b>119.775</b>	CHATTANOOGA APP CON * <b>125.1 379.1</b>	UNICOM <b>122.8 (CTAF) 0</b>
--------------------------	---	---------------------------------



CATEGORY	A	B	C	D
LP MDA	1380-1 604 (700-1)		NA	
LNAV MDA	1440-1 664 (700-1)		NA	
<b>C</b> CIRCLING	1660-1½ 884 (900-1½)		NA	



SE-4, 31 OCT 2024 to 28 NOV 2024

SE-4, 31 OCT 2024 to 28 NOV 2024