

# RNAV (GPS) RWY 6

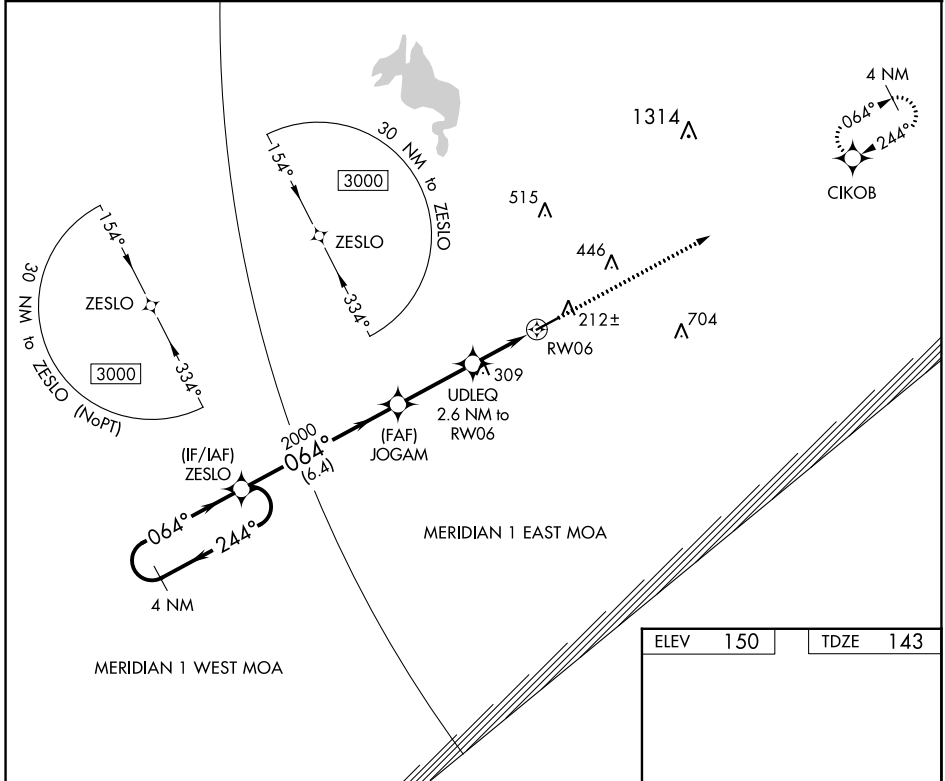
GEORGE DOWNER (AIV)

|             |          |             |
|-------------|----------|-------------|
| APP CRS     | Rwy Idg  | <b>5001</b> |
| <b>064°</b> | TDZE     | <b>143</b>  |
|             | Apt Elev | <b>150</b>  |

**NA** DME/DME RNP-0.3 NA. Use Tuscaloosa Nil altimeter setting; when not received, use Columbus/W Point/Starkville altimeter setting and increase all MDA 20 feet, and Circling Cat C visibility ¼ mile. Procedure NA at night. Helicopter visibility reduction below 1 SM NA.

**MISSED APPROACH:**  
Climb to 3000 direct  
CIKOB and hold.

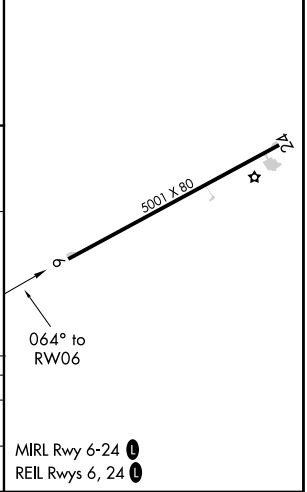
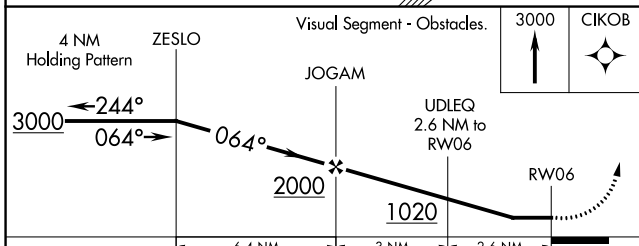
|                            |  |                                 |
|----------------------------|--|---------------------------------|
| TCL ASOS<br><b>132.825</b> | COLUMBUS APP CON<br><b>135.6 323.275</b> | UNICOM<br><b>122.8 (CTAF) 0</b> |
|----------------------------|--|---------------------------------|



SE-4, 31 OCT 2024 to 28 NOV 2024

SE-4, 31 OCT 2024 to 28 NOV 2024

|      |     |      |     |
|------|-----|------|-----|
| ELEV | 150 | TDZE | 143 |
|------|-----|------|-----|



| CATEGORY          | A     | B           | C   | D   |
|-------------------|-------|-------------|---|---|
| LNVA MDA          | 640-1 | 497 (500-1) | 640-1 <sup>3</sup> / <sub>8</sub>   | 497 (500-1 <sup>3</sup> / <sub>8</sub> )                                      |
| <b>C</b> CIRCLING | 720-1 | 570 (600-1) | 820-1 <sup>3</sup> / <sub>4</sub><br>670 (700-1 <sup>3</sup> / <sub>4</sub> ) | 900-2 <sup>1</sup> / <sub>2</sub><br>750 (800-2 <sup>1</sup> / <sub>2</sub> ) |