

LOUISVILLE, GEORGIA

AL-9837 (FAA)

24193

WAAS CH 90439 W31A	APP CRS 307°	Rwy Idg TDZE Apt Elev	5002 319 328
--	------------------------	-----------------------------	---

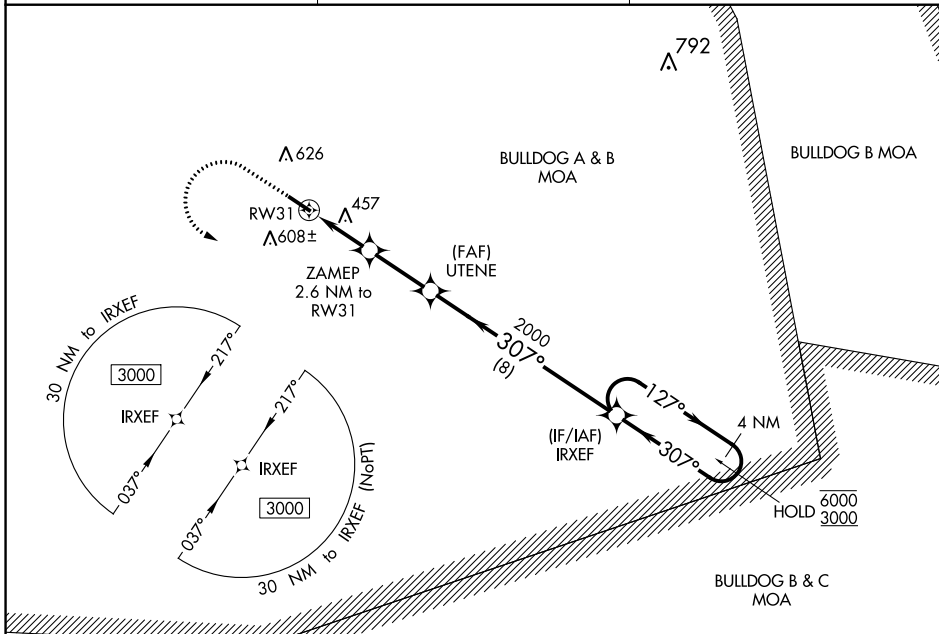
RNAV (GPS) RWY 31

LOUISVILLE MUNI (2J3)

RNP APCH - GPS.
 For uncompensated Baro-VNAV systems, LNAV/VNAV NA below -15°C or above 54°C.

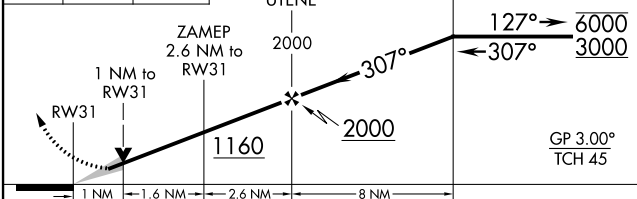
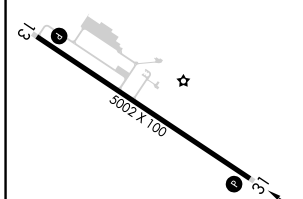
MISSED APPROACH: Climb to 1000 then climbing left turn to 3000 direct IRXEF and hold.

AWOS-3PT 119.35	AUGUSTA APP CON 126.8 270.3	CTAF 122.9
---------------------------	---------------------------------------	----------------------



ELEV 328	TDZE 319
----------	----------

1000 3000 IRXEF
 VGSI and RNAV glidepath not coincident (VGSI Angle 3.65/TCH 27).
 4 NM Holding Pattern



CATEGORY	A	B	C	D
LPV DA	569-1		250 (300-1)	
LNAV/VNAV DA	720-1½		401 (400-1½)	
LNAV MDA	720-1	401 (400-1)	720-1½	401 (400-1½)
CIRCLING	840-1 512 (600-1)	980-1 652 (700-1)	980-1¾ 652 (700-1¾)	980-2 652 (700-2)

REIL Rwy 13 and 31
 MIRL Rwy 13-31

LOUISVILLE, GEORGIA
 Orig-A 11AUG22

32°59'N-82°23'W

RNAV (GPS) RWY 31

LOUISVILLE MUNI (2J3)

SE-4, 31 OCT 2024 to 28 NOV 2024

SE-4, 31 OCT 2024 to 28 NOV 2024