

WAAS CH <b>56643</b> <b>W05A</b>	APP CRS <b>049°</b>	Rwy Idg TDZE Apt Elev	<b>4700</b> <b>5377</b> <b>5377</b>
--	------------------------	-----------------------------	---

# RNAV (GPS) RWY 5

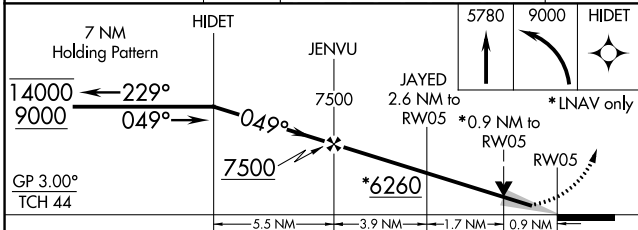
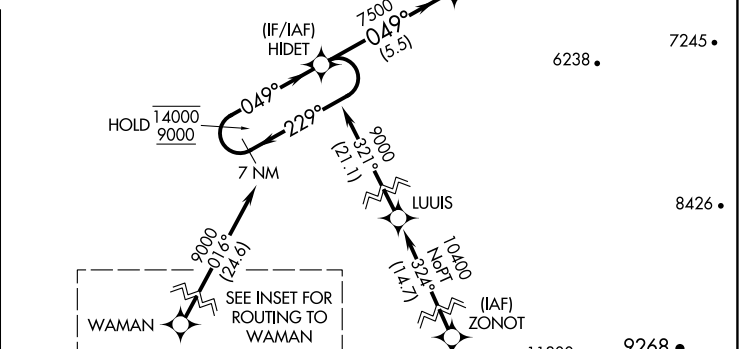
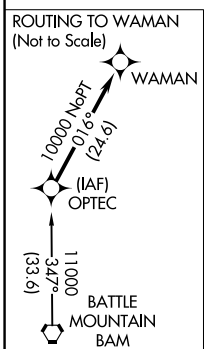
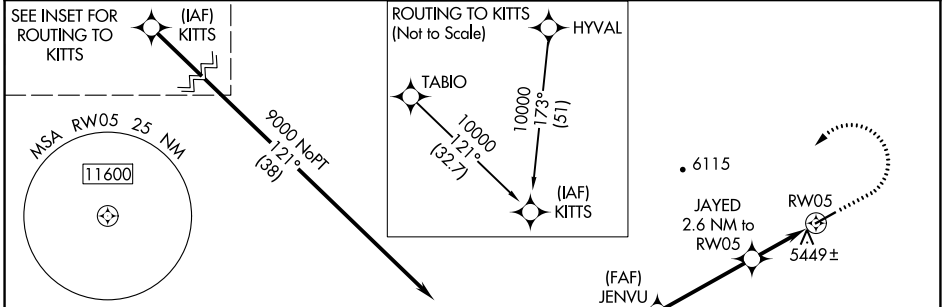
OWYHEE (10U)

RNP APCH.

**⚠** Circling Cats C/D NA southeast of Rwy 5-23.  
**⚠** For uncompensated Baro-VNAV systems, LNAV/VNAV NA below -25°C or above 54°C.

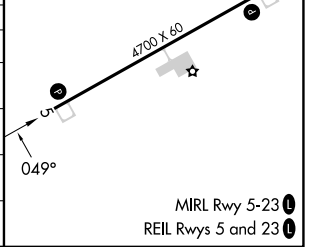
MISSED APPROACH: Climb to 5780 then climbing left turn to 9000 direct HIDE1 and hold, continue climb-in-hold to 9000.  
 # Missed approach requires minimum climb of 250 feet per NM to 6500.

AWOS-3PT <b>118.525</b>	SALT LAKE CENTER <b>118.05 363.0</b>	CTAF <b>122.90</b>
----------------------------	---	-----------------------



ELEV 5377	TDZE 5377
-----------	-----------

CATEGORY	A	B	C	D
LPV DA		5577-1	200 (200-1)	
LNAV/VNAV DA#		5627-1	250 (300-1)	
LNAV/VNAV DA	5627-1	250 (300-1)	5909-1½ 532 (600-1½)	5922-1½ 545 (600-1½)
LNAV MDA	5700-1	323 (400-1)		5960-1¾ 583 (600-1¾)
<b>C</b> CIRCLING	5760-1 383 (400-1)	5840-1 463 (500-1)	5840-1½ 463 (500-1½)	6860-3 1483 (1500-3)



SW-4, 31 OCT 2024 to 28 NOV 2024

SW-4, 31 OCT 2024 to 28 NOV 2024