

WAAS CH <b>48840</b> <b>W35A</b>	APP CRS <b>351°</b>	Rwy Idg TDZE <b>138</b> Apt Elev <b>138</b>
--	------------------------	---

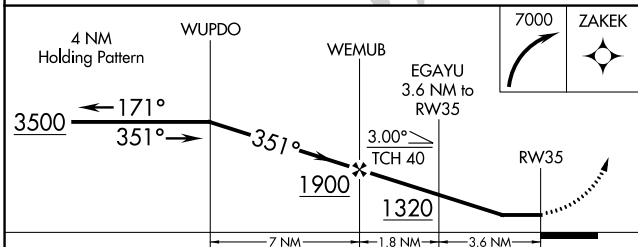
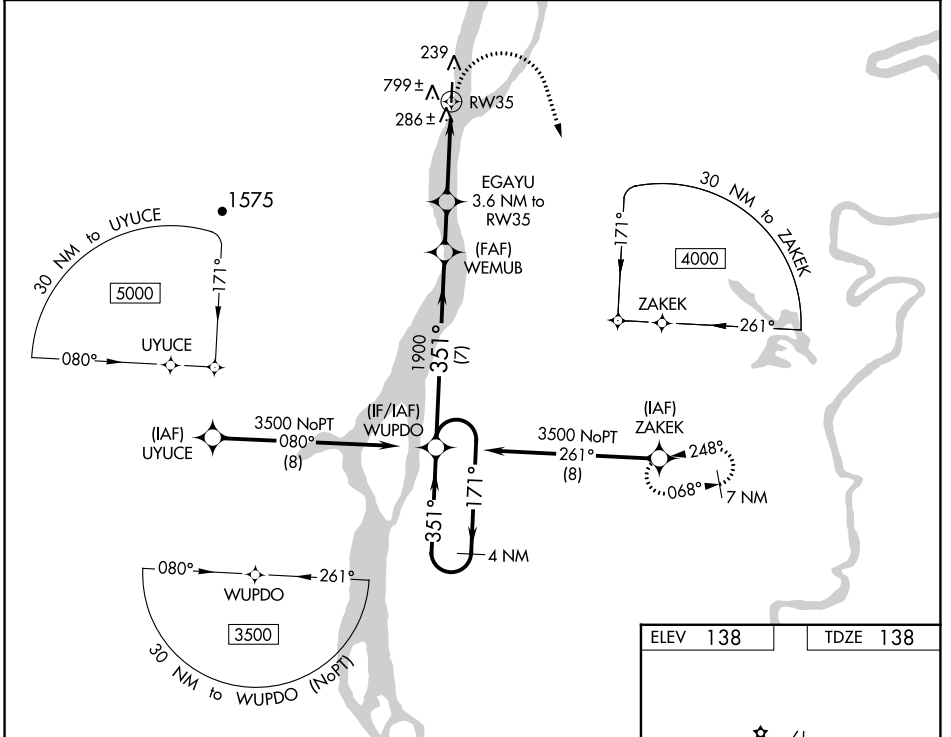
# RNAV (GPS) RWY 35

GRAYLING (KGX)(PAGX)

**⚠ NA** Circling NA west of Rwy 17-35. Rwy 35 helicopter visibility reduction below ¼ SM NA. DME/DME RNP-0.3 NA.  
**⚠ -23°C** Use Shageluk altimeter setting; when not received, use Anvik altimeter setting.

MISSED APPROACH: Climbing right turn to 7000 direct ZAKEK and hold, continue climb-in-hold to 7000.

SHX/PAHX AWOS-3P <b>121.575</b>	ANCHORAGE CENTER <b>118.15 251.05</b>	KENAI RADIO <b>122.4</b>	CTAF <b>122.9</b>
------------------------------------	--	-----------------------------	----------------------



ELEV 138	TDZE 138
----------	----------

☆ ZL

4000 X 75

1 1/2 UP

35

351°

MIRL Rwy 17-35

CATEGORY	A	B	C	D
IP MDA	700-1	562 (600-1)	700-1 5/8	562 (600-1 5/8)
LNAV MDA	1080-1 1/4	942 (1000-1 1/4)	1080-2 1/2	942 (1000-2 1/2)
<b>C</b> CIRCLING	1100-1 1/4 962 (1000-1 1/4)	1100-1 1/2 962 (1000-1 1/2)	1220-3 1082 (1100-3)	1420-3 1282 (1300-3)

AK, 31 OCT 2024 to 26 DEC 2024

AK, 31 OCT 2024 to 26 DEC 2024