

WAAS CH 70528 W09A	APP CRS 094°	Rwy Idg 5002 TDZE 357 Apt Elev 359
--	------------------------	---

RNAV (GPS) RWY 9

HEADLAND MUNI (HDL)

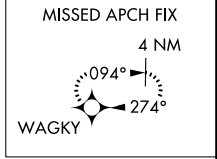
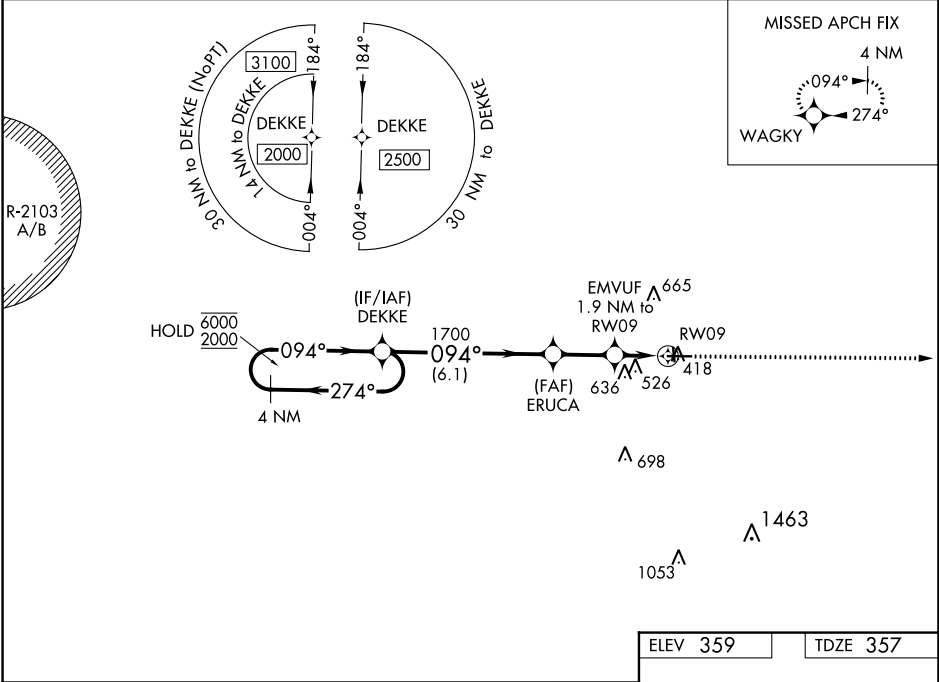
RNP APCH - GPS.
 ⚠ Circling NA to Rwy 17 and 35. Circling Rwy 27 NA at night.
 ⚠ Rwy 9 helicopter visibility reduction below 3/4 SM NA.

MISSED APPROACH: Climb to 2000 direct WAGKY and hold.

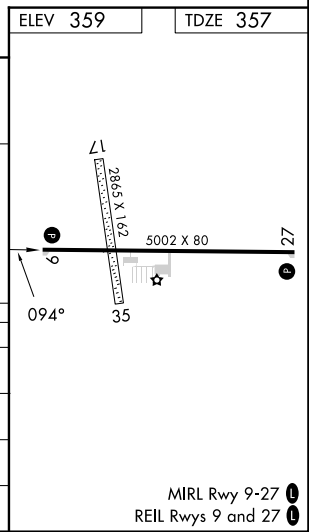
AWOS-3PT
119.575

CAIRNS APP CON ★
125.4

CTAF
122.90



4 NM Holding Pattern	DEKKE	ERUCA	EMVUF 1.9 NM to RWY 9	2000	WAGKY
6000 2000	1700	1700	980	1.3 NM to RWY 9	
GP 3.00° TCH 40	6.1 NM	2.2 NM	0.6	1.3	
CATEGORY	A	B	C	D	
LPV DA	631-1 274 (300-1)				NA
LNAV/DA	810-1 3/8 453 (500-1 3/8)				NA
LNAV MDA	800-1 443 (500-1)		800-1 3/8 443 (500-1 3/8)		NA
CIRCLING	860-1 501 (600-1)	940-1 581 (600-1)	980-1 3/4 621 (700-1 3/4)		NA



MIRL Rwy 9-27
REIL Rwy 9 and 27

SE-4, 31 OCT 2024 to 28 NOV 2024

SE-4, 31 OCT 2024 to 28 NOV 2024