

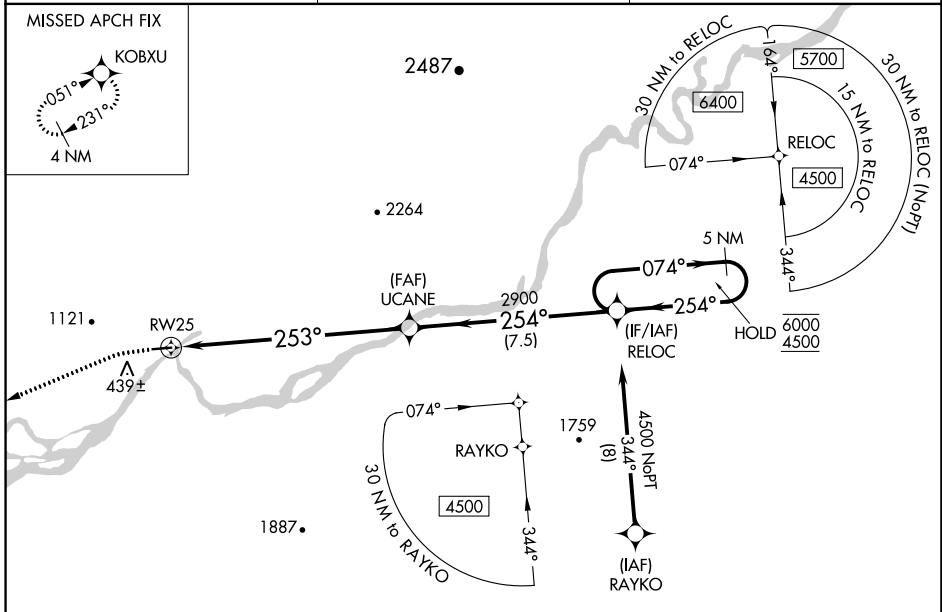
WAAS CH <b>63143</b> <b>W25A</b>	APP CRS <b>253°</b>	Rwy Idg TDZE <b>175</b> Apt Elev <b>179</b>
--	------------------------	---

# RNAV (GPS) RWY 25

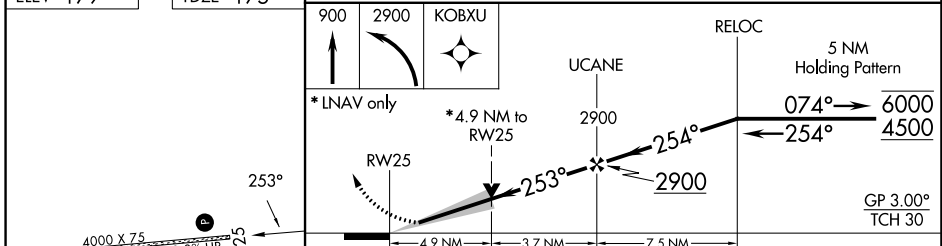
BOB BAKER MEML (IAN) (PAIK)

RNP APCH-GPS.	MISSED APPROACH: Climb to 900 then climbing left turn to 2900 direct KOBXU and hold. #Missed approach requires minimum climb of 335 feet per NM to 1440.
<p>▽ Circling NA north of Rwy 7-25.</p> <p>▲ NA Circling Rwy 7 NA at night.</p> <p>⊖ -28°C Baro-VNAV NA.</p>	

AWOS-3P <b>119.025</b>	ANCHORAGE CENTER <b>119.2 263.0</b>	CTAF <b>122.70</b>
---------------------------	--	-----------------------



ELEV 179	TDZE 175
----------	----------



CATEGORY	A	B	C	D
LPV DA#		450-1	275 (300-1)	
LPV DA		639-1 $\frac{3}{8}$	464 (500-1 $\frac{3}{8}$ )	
LNAV/VNAV DA		807-1 $\frac{3}{4}$	632 (700-1 $\frac{3}{4}$ )	
LNAV MDA	1740-1 $\frac{1}{4}$ 1565 (1600-1 $\frac{1}{4}$ )	1740-1 $\frac{1}{2}$ 1565 (1600-1 $\frac{1}{2}$ )	1740-3	1565 (1600-3)
<b>C</b> CIRCLING	1740-1 $\frac{1}{4}$ 1561 (1600-1 $\frac{1}{4}$ )	1740-1 $\frac{1}{2}$ 1561 (1600-1 $\frac{1}{2}$ )	1740-3	1561 (1600-3)

MIRL Rwy 7-25 **Ⓛ**  
REL Rwy 25 **Ⓛ**

KIANA, ALASKA  
Amdt 1A 14JUL22

66°59'N-160°26'W

BOB BAKER MEML (IAN) (PAIK)  
**RNAV (GPS) RWY 25**

AK, 31 OCT 2024 to 26 DEC 2024

AK, 31 OCT 2024 to 26 DEC 2024