

APP CRS	Rwy Idg	5001
173°	TDZE	240
	Apt Elev	240

RNAV (GPS) RWY 17

MILLEN (2J5)

RNP APCH.

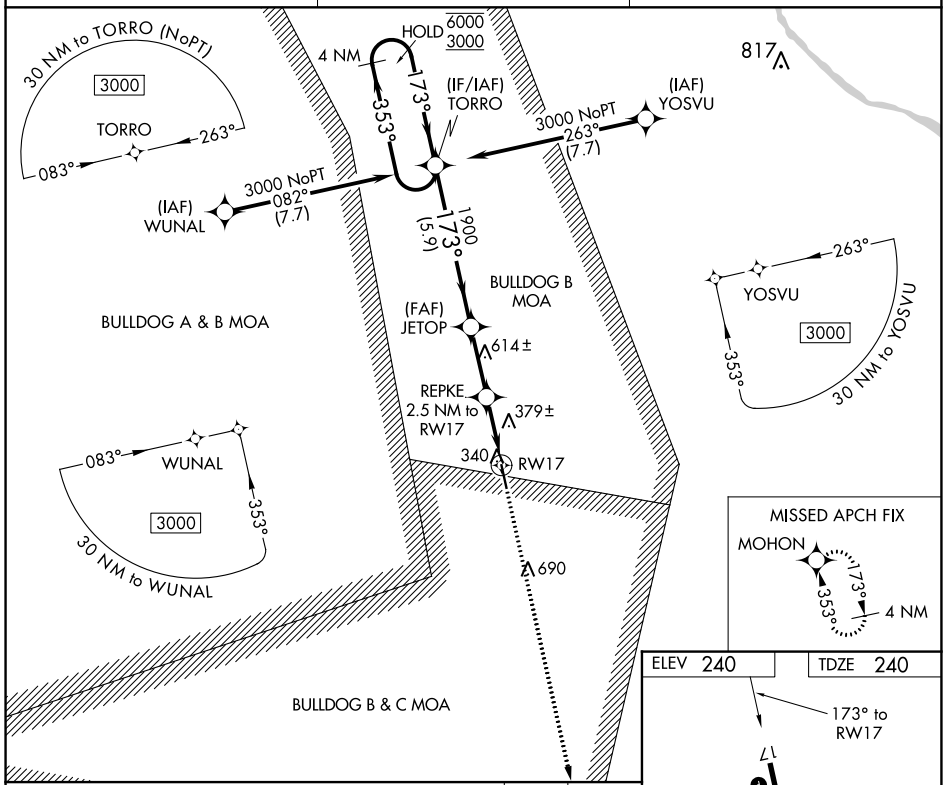
⚠ Circling NA east of Rwy 17-35. Rwy 17 helicopter visibility reduction below 1 SM NA. Straight-in and Circling Rwy 17 NA at night.

MISSED APPROACH: Climb to 3000 direct MOHON and hold.

AWOS-3PT
120.2

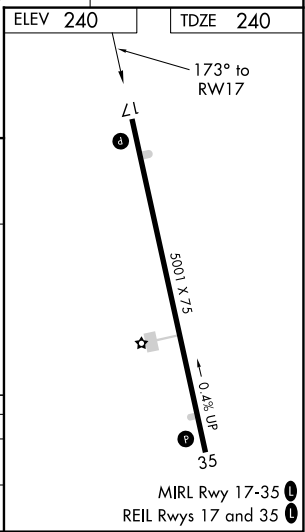
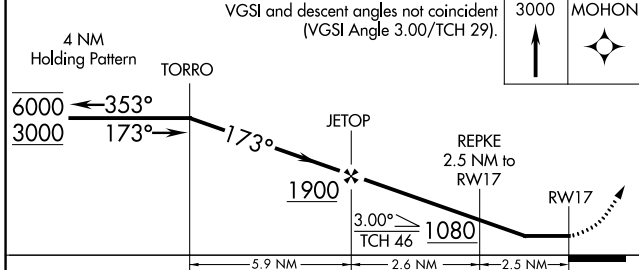
AUGUSTA APP CON *
126.8 270.3

CTAF
122.90



SE-4, 31 OCT 2024 to 28 NOV 2024

SE-4, 31 OCT 2024 to 28 NOV 2024



CATEGORY	A	B	C	D
LNVA MDA	640-1	400 (400-1)	640-1½	400 (400-1½)
C CIRCLING	680-1 440 (500-1)	700-1 460 (500-1)	700-1½ 460 (500-1½)	1040-2½ 800 (800-2½)