

APP CRS	Rwy Idg	4020
080°	TDZE	142
	Apt Elev	142

RNAV (GPS) RWY 9

KOBUK (OBU) (PAOB)

RNP APCH - GPS.

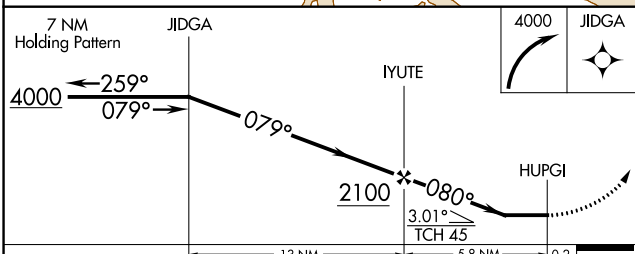
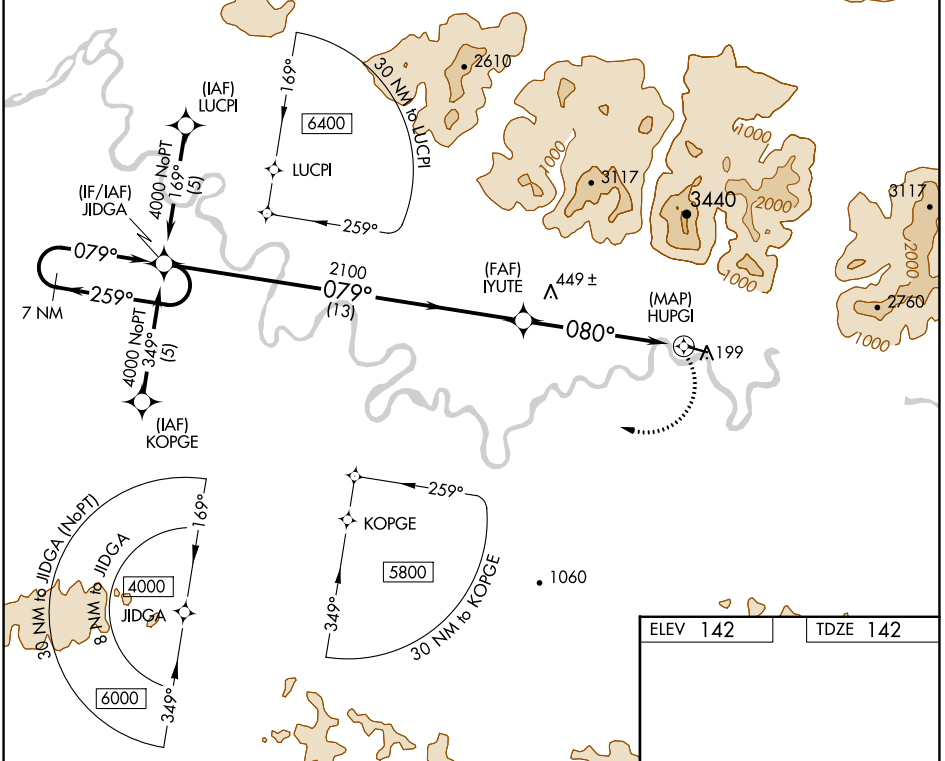
▼ Use Amber altimeter setting. Circling NA north of Rwy 9-27.

▲ NA Rwy 9 helicopter visibility reduction below 3/4 SM NA.

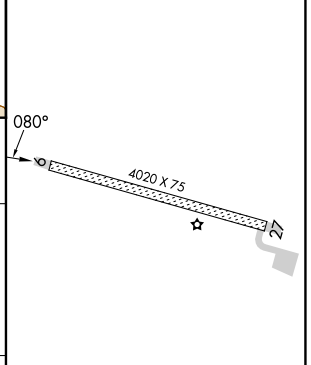
☄ -37°C Circling Rwy 27 NA at night.

MISSED APPROACH: Climbing right turn to 4000 direct JIDGA and hold.

AFM/PAFM AWOS-3P 132.1	ANCHORAGE CENTER 119.2 263.0	KOTZEBUE RADIO 122.0	CTAF 122.7
----------------------------------	--	--------------------------------	----------------------



ELEV 142	TDZE 142
----------	----------



CATEGORY	A	B	C	D
LNVA MDA	780-1	638 (700-1)	780-1 3/4 638 (700-1 3/4)	780-2 638 (700-2)
CIRCLING	780-1	638 (700-1)	780-1 3/4 638 (700-1 3/4)	840-2 1/4 698 (700-2 1/4)

MIRL Rwy 9-27

AK, 31 OCT 2024 to 26 DEC 2024

AK, 31 OCT 2024 to 26 DEC 2024