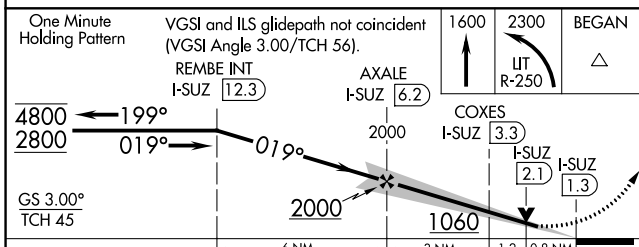
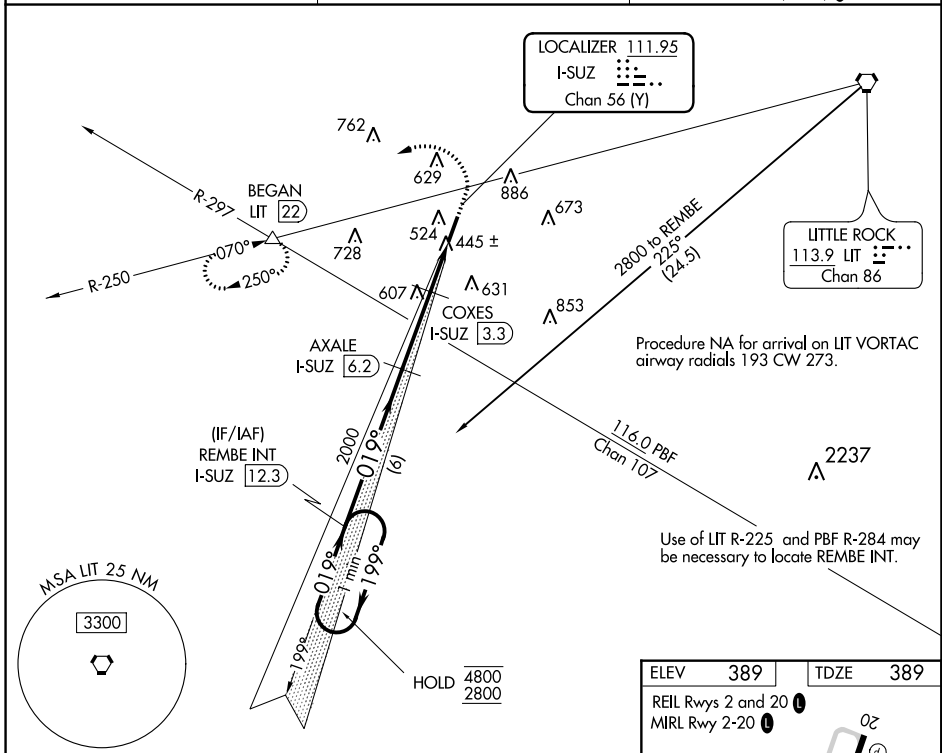


LOC/DME I-SUZ 111.95 Chan 56 (Y)	APP CRS 019°	Rwy Idg TDZE Apt Elev	5002 389 389
--	------------------------	-----------------------------	---

ILS or LOC RWY 2

SALINE COUNTY RGNL (SUZ)

DME required for LOC only.		MISSED APPROACH: Climb to 1600 then climbing left turn to 2300 on LIT VORTAC R-250 to BEGAN INT/LIT 22 DME and hold.
<p>▼ Rwy 2 helicopter visibility reduction below 3/4 SM NA.</p>		
AWOS-3 132.125	LITTLE ROCK APP CON 119.5 306.2	UNICOM 122.8 (CTAF) 0



ELEV 389	TDZE 389
REIL Rwy 2 and 20 0	
MIRL Rwy 2-20 0	
FAF to MAP 4.9 NM	
Knots	60 90 120 150 180
Min:Sec	4:54 3:16 2:27 1:58 1:38

CATEGORY	A	B	C	D
S-ILS 2		639-3/4	250 (300-3/4)	
S-LOC 2	700-1	311 (400-1)	700-7/8	311 (400-7/8)
C CIRCLING	940-1 551 (600-1)	1080-1 691 (700-1)	1200-2 1/2 811 (900-2 1/2)	1200-2 3/4 811 (900-2 3/4)

SC-1, 31 OCT 2024 to 28 NOV 2024

SC-1, 31 OCT 2024 to 28 NOV 2024