

APP CRS **097°**
 Rwy Idg **4206**
 TDZE **240**
 Apt Elev **251**

RNAV (GPS) RWY 10

BIBB COUNTY (ØA8)

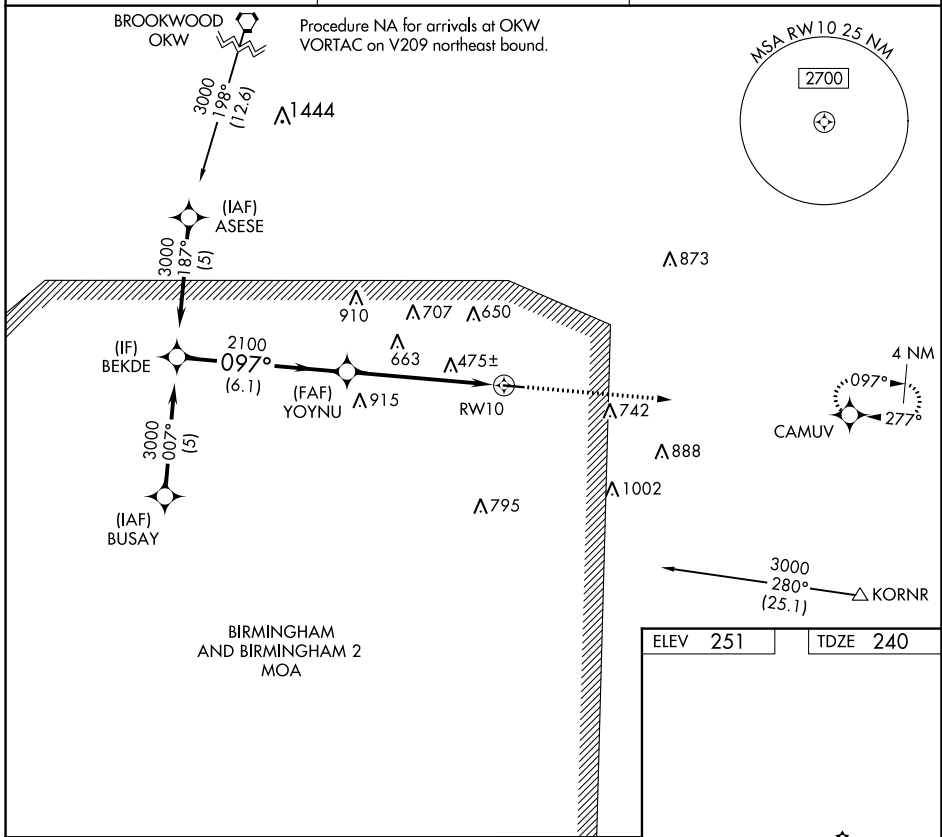
RNP APCH. **▽** Rwy 10 helicopter visibility reduction below 1 SM NA. Use Tuscaloosa altimeter setting; when not received, use Alabaster altimeter setting and increase all MDAs 20 feet. Procedure NA at night. **▲ NA**

MISSED APPROACH: Climb to 3000 direct CAMUV and hold.

TCL ASOS
132.825

ATLANTA CENTER
132.25 263.025

UNICOM
122.975 (CTAF) 0

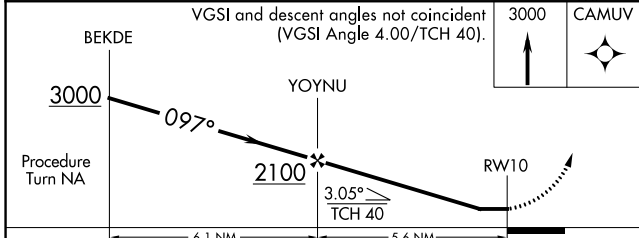


SE-4, 31 OCT 2024 to 28 NOV 2024

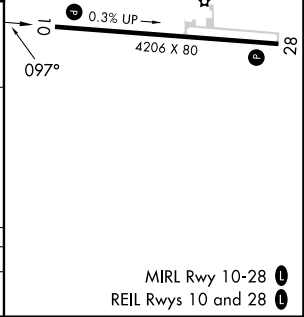
SE-4, 31 OCT 2024 to 28 NOV 2024

BIRMINGHAM
 AND BIRMINGHAM 2
 MOA

ELEV **251** | TDZE **240**



CATEGORY	A	B	C	D
LNVAI MDA	960-1	720 (800-1)	960-2 720 (800-2)	NA



MIRL Rwy 10-28 **0**
 REIL Rwy 10 and 28 **0**