

APP CRS	Rwy Idg	4206
277°	TDZE	251
	Apt Elev	251

RNAV (GPS) RWY 28

BIBB COUNTY (ØA8)

RNP APCH-GPS.

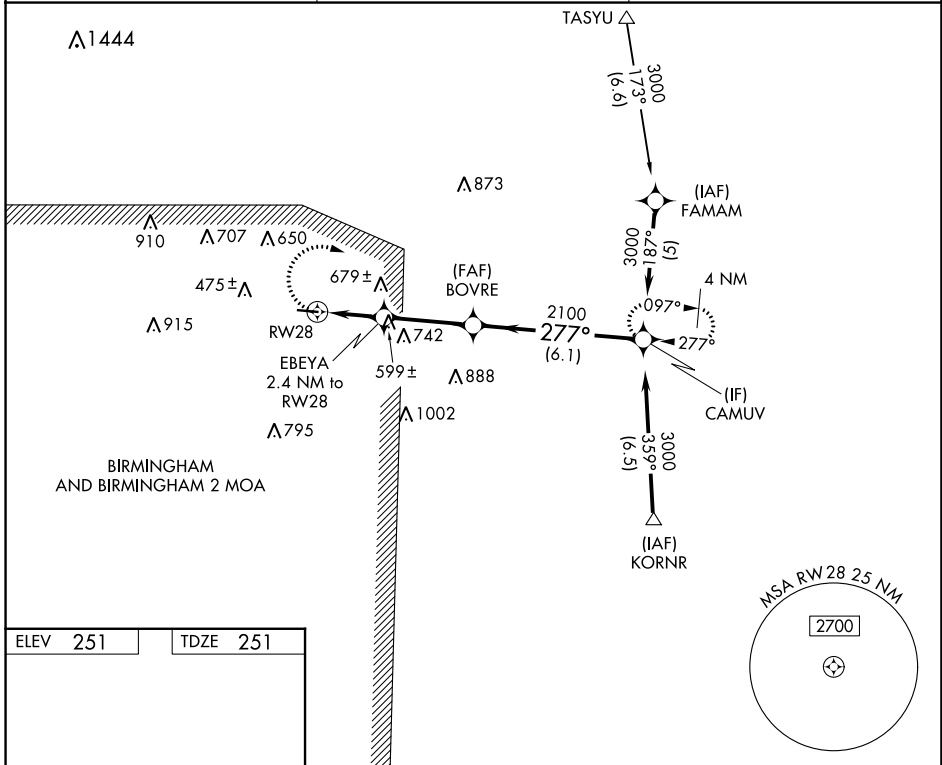
▼ Procedure NA at night. Rwy 28 helicopter visibility reduction below ¾ SM NA.
▲NA Use Tuscaloosa altimeter setting; when not received, use Alabaster altimeter setting; increase all MDAs 20 feet and visibility LNAV Cat C ¼ SM and Circling Cat B/C ¼ SM.

MISSED APPROACH:
 Climbing right turn to 3000 direct CAMUV and hold.

TCL ASOS
132.825

ATLANTA CENTER
132.25 263.025

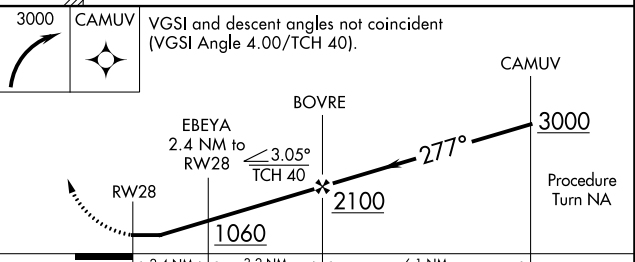
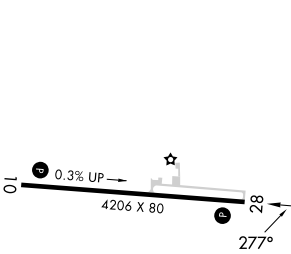
UNICOM
122.975 (CTAF) Ø



SE-4, 31 OCT 2024 to 28 NOV 2024

SE-4, 31 OCT 2024 to 28 NOV 2024

ELEV	251	TDZE	251
------	-----	------	-----



CATEGORY	A	B	C	D
LNAV MDA	920-1	669 (700-1)	920-1¾ 669 (700-1¾)	NA
CIRCLING	1020-1 769 (800-1)	1060-1 809 (900-1)	1120-2½ 869 (900-2½)	NA

MIRL Rwy 10-28 Ø
 REIL Rwy 10 and 28 Ø