

APP CRS <b>322°</b>	Rwy Idg <b>5125</b>
	TDZE <b>20</b>
	Apt Elev <b>20</b>

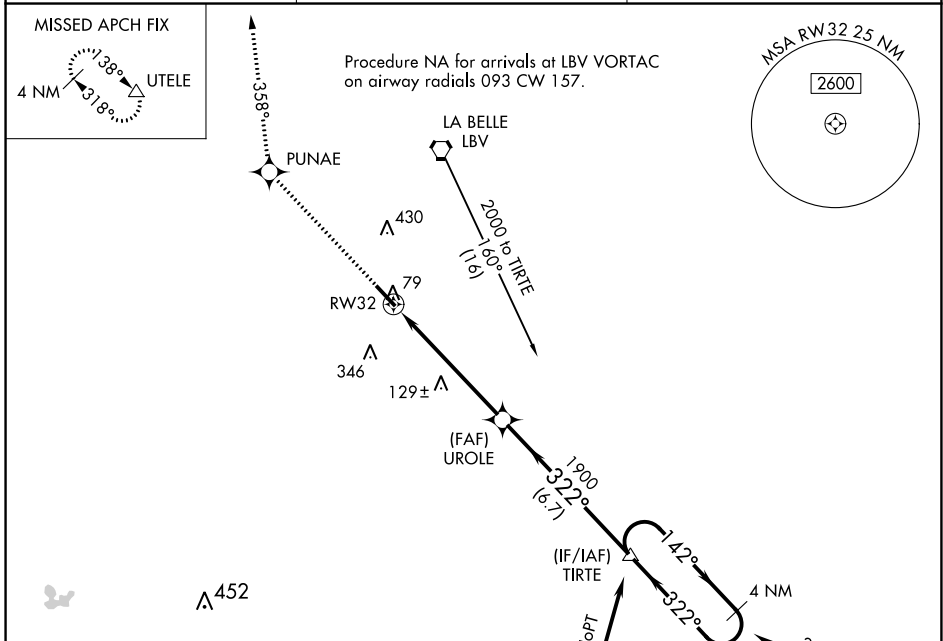
# RNAV (GPS) RWY 32

LA BELLE MUNI (X14)

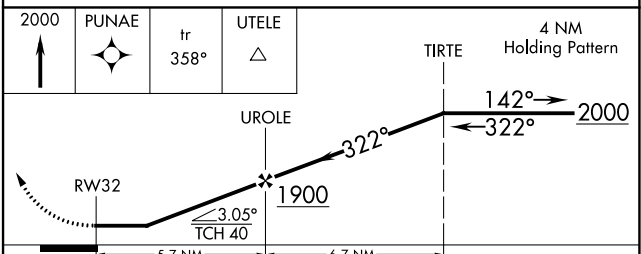
**NA** DME/DME RNP-0.3 NA. Helicopter visibility reduction below  $\frac{3}{4}$  SM NA. Use Southwest Florida Intl altimeter setting; when not received, use Page Fld altimeter setting and increase all MDAs 20 feet.

**MISSED APPROACH:** Climb to 2000 direct PUNAE then via 358° track to UTELE and hold.

RSW ASOS <b>124.65</b>	FORT MYERS APP CON <b>126.8</b>	UNICOM <b>122.8</b> (CTAF) <b>1</b>
---------------------------	------------------------------------	--



ELEV 20	<b>D</b>	TDZE 20
---------	----------	---------



CATEGORY	A	B	C	D
LNAV MDA	480-1	460 (500-1)	480-1¼ 460 (500-1¼)	480-1½ 460 (500-1½)
CIRCLING	580-1	560 (600-1)	800-2¼ 780 (800-2¼)	800-2½ 780 (800-2½)

MIRL Rwy 14-32 **1**  
REIL Rws 14 and 32 **1**

SE-3, 31 OCT 2024 to 28 NOV 2024

SE-3, 31 OCT 2024 to 28 NOV 2024